

REGULATEUR DE DEBIT

M-1



MATÉRIAUX

CORPS.....POLYAMIDE

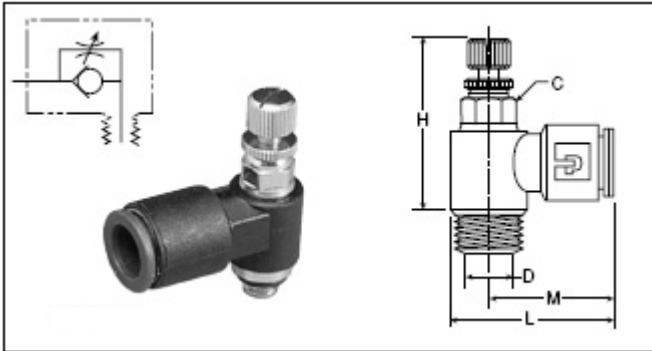
FILETS.....LAITON

PRESSION DE TRAVAIL MAX

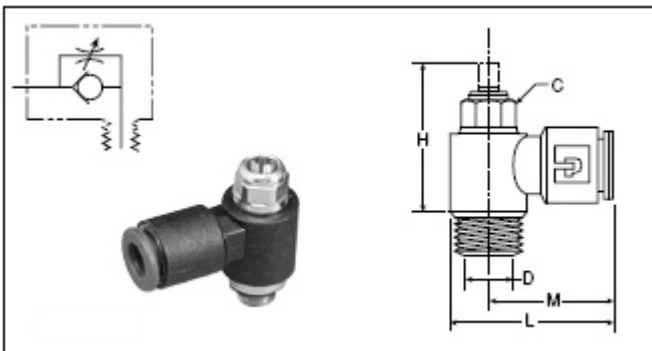
145 PSIG (10 bar - 1000kPa) MAX.

TEMPÉRATURE DE TRAVAIL

0°F A 140°F (-18°C A 60°C)



Part No.	Tube Size	Thread Size	C Hex (mm)	H Closed	H Open	L	M	Flow Dia. D	Adjusted Flow (SCFM)	Free Flow (SCFM)
M.0100	5/32	10-32	6	0.925	1.023	0.846	0.669	0.080	5.23	2.90
M.0105	5/32	1/8	7	1.000	1.083	0.935	0.708	0.100	8.41	6.32
M.0110	1/4	10-32	6	0.925	1.023	0.885	0.708	0.080	9.94	3.86
M.0115	1/4	1/8	7	1.000	1.083	0.957	0.730	0.100	10.56	5.08
M.0130	1/4	1/4	8	1.083	1.180	1.013	0.748	0.160	18.79	10.79



Part No.	Tube Size	Thread Size	C Hex (mm)	H Closed	H Open	L	M	Flow Dia. D	Adjusted Flow (SCFM)	Free Flow (SCFM)
M.1100	5/32	10-32	6	0.650	0.787	0.846	0.669	0.080	7.43	4.76
M.1115	1/4	1/8	7	0.708	0.860	0.956	0.730	0.100	12.08	5.86
M.1130	1/4	1/4	8	0.826	0.964	1.013	0.748	0.160	19.55	10.89

REGULATEUR DE DEBIT

M-2



MATÉRIAUX

CORPS.....POLYAMIDE

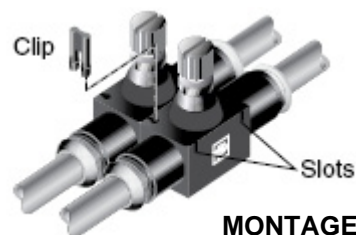
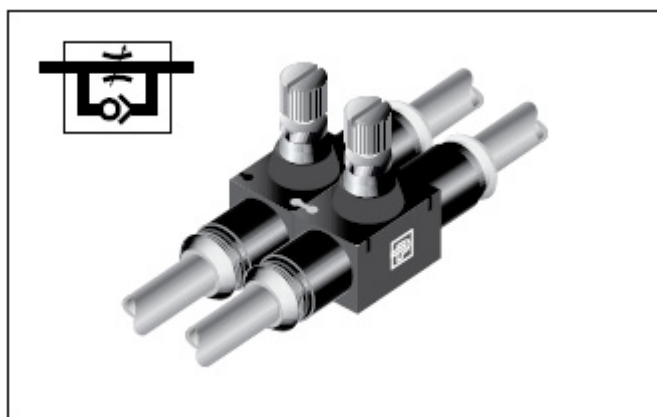
FILETS.....LAITON

PRESSION DE TRAVAIL MAX

145 PSIG (10 bar - 1000kPa) MAX.

TEMPÉRATURE DE TRAVAIL

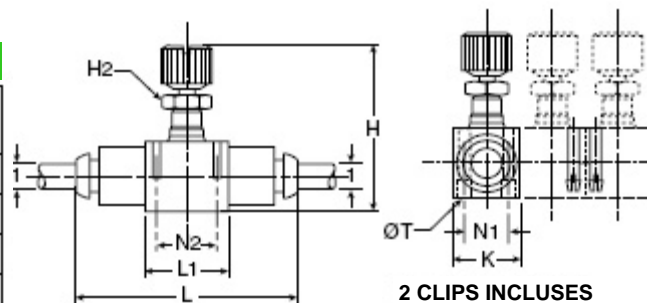
0°F A 140°F (-18°C A 60°C)



MONTAGE MODULAIRE

RÉGULATEUR DE DÉBIT EN LIGNE CONNECTIONS TUBES

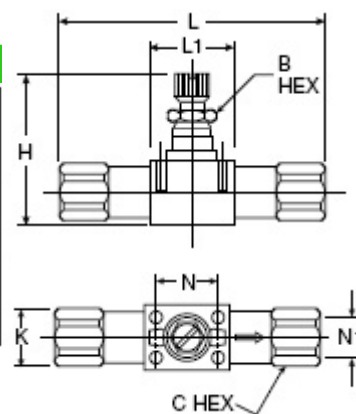
Part No.	1 ØD	H Min.	H Max.	L	L1	K	N1	N2	T	Orifice	H2 (mm)
M.0300	5/32	1.15	1.31	1.52	.59	.47	.31	.43	.09	.12	5
M.0305	1/4	1.54	1.74	2.11	.90	.66	.43	.66	.12	.16	8
M.0315	3/8	2.03	2.38	2.96	1.29	.94	.62	1.01	.16	.31	14
M.0320	1/2	2.24	2.63	3.35	1.37	1.09	.78	1.07	.16	.39	14



2 CLIPS INCLUDES

RÉGULATEUR DE DÉBIT EN LIGNE CONNECTIONS FILETS NPT

Part No.	Thread Size	B Hex (mm)	C Hex (mm)	H Closed	H Open	L	L1	K	N	N1
M.1290	1/8	13	8	1.56	1.75	2.70	.91	.67	.67	.43
M.1305	1/4	16	11	1.73	1.97	3.27	1.02	.73	.79	.49
M.1315	3/8	22	14	2.05	2.40	3.82	1.30	.94	1.02	.63
M.1320	1/2	24	14	2.26	2.66	4.76	1.38	1.10	1.08	.79



REGULATEUR DE DEBIT

M-3



PRESSION DE TRAVAIL MAX

145 PSIG (10 bar - 1000kPa) MAX.

TEMPÉRATURE DE TRAVAIL

0°F A 140°F (-18°C A 60°C)

MATÉRIAUX

ALLIAGE DE ZINC

DÉBIT

No of Turns	Exhaust (Screw Open)	Inlet (Screw Closed)
12	1.8 SCFM	1.8 SCFM

RÉGULATEUR DE DEBIT 90° CONNECTIONS TUBE / FILET MALE



M.3469

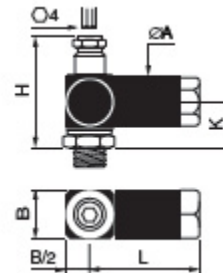
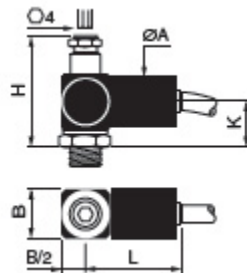
Symbol	BSP			NPT		
	Cylinder Port Thread	Connection for Tube	Catalog Number	Cylinder Port Thread	Connection for Tube	Catalog Number
	1/8"	6mm	M.1468	1/8"	1/4"	M.3468
		8mm	M.1488			
	1/4"	6mm	M.1469	1/4"	1/4"	M.3469
	3/8"	8mm	M.1483	3/8"	3/8"	M.3493
	1/2"	12mm	M.1412	1/2"	1/2"	M.3412

RÉGULATEUR DE DEBIT 90° CONNECTIONS FILET FEMELLE / FILET MALE



M.3833

Symbol	BSP			NPT		
	Cylinder Port Thread	Connection Tapped Thread	Catalog Number	Cylinder Port Thread	Connection Tapped Thread	Catalog Number
	1/8"	1/8"	M.1888	1/8"	1/8"	M.3888
	1/4"	1/4"	M.1899	1/4"	1/4"	M.3899
	3/8"	3/8"	M.1833	3/8"	3/8"	M.3833
	1/2"	1/2"	M.1822	1/2"	1/2"	M.3822



	Adjustment*	Flow**	ØA	B	K	H	L
M.1468 / M.3468	10	15.9	0.67" (17)	0.71" (18)	0.67" (17)	1.77" (45)	1.26" (32)
M.1488	14	23.0	0.87" (22)	0.83" (21)	0.83" (21)	2.17" (55)	1.54" (39)
M.1469 / M.3469	14	26.5	0.87" (22)	0.83" (21)	0.83" (21)	2.17" (55)	1.54" (39)
M.1483 / M.3483	14	61.8	1.06" (27)	1.10" (28)	1.02" (26)	2.36" (60)	1.97" (50)
M.1412 / M.3412	20	97.1	1.22" (31)	1.30" (33)	1.38" (35)	3.03" (77)	2.60" (66)
M.1888 / M.3888	10	15.9	0.67" (17)	0.71" (18)	0.67" (17)	1.77" (45)	1.44" (36.5)
M.1899 / M.3899	14	31.8	0.87" (22)	0.83" (21)	0.83" (21)	2.17" (55)	1.71" (43.5)
M.1833 / M.3833	14	68.9	1.06" (27)	1.10" (28)	1.02" (26)	2.36" (60)	2.19" (55.5)
M.1822 / M.3822	20	97.1	1.22" (31)	1.30" (33)	1.38" (35)	3.03" (77)	2.48" (63)

REGULATEUR DE DEBIT

M-4



PRESSION DE TRAVAIL MAX

145 PSIG (10 bar - 1000kPa) MAX.

TEMPÉRATURE DE TRAVAIL

0°F A 140°F (-18°C A 60°C)

MATÉRIAUX

THERMOPLASTIQUE ET LAITON

DÉBIT

No of Turns	Exhaust (Screw Open)	Inlet (Screw Closed)
12	1.8 SCFM	1.8 SCFM



M.4445

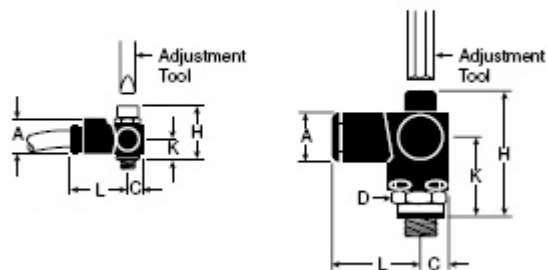


M.4469

RÉGULATEUR DE DEBIT 90° CONNECTIONS FILET FEMELLE / FILET MALE

Symbol	BSP			NPT		
	Cylinder Port Thread	Connection for Tube	Catalog Number	Cylinder Port Thread	Connection for Tube	Catalog Number
	M5	4mm	M.2445	10-32 UNF	5/32"	M.4445
		4mm	M.2448		10-32 UNF	M.4455
	1/8"	4mm	M.2448	1/8"	5/32"	M.4448
		6mm	M.2468		1/4"	M.4468
1/4"	6mm	M.2469	1/4"	1/4"	M.4469	
	8mm	M.2483		3/8"	M.4493	
Reverse Flow 	M5	4mm	M.2145	10-32UNF	5/32"	M.4145

Dimensions: Inches (mm)



	Adjustment	# Turns	Flow*	ØA	C	D Hex.	K	H	L
M.2445 / M.4445 M.2145 / M.4145 M.4455	3mm screwdriver	12	1.8	0.43" (11)	0.16" (4)	5/16" (8)	0.28" (7.2)	0.67" (17)	0.83" (21)
M.2448 / M.4448	3mm Allen key	14	10.2	0.55" (14)	0.31" (8)	9/16" (14)	0.94" (23.8)	1.77" (45)	0.94" (24)
M.2468 / M.4468	3mm Allen key	14	23.0	0.55" (14)	0.31" (8)	9/16" (14)	0.94" (23.8)	1.77" (45)	0.94" (24)
M.2469 / M.4469	4mm Allen key	18	23.0	0.63" (16)	0.41" (10.5)	11/16" (17)	1.04" (26.5)	1.94" (49.3)	1.06" (27)
M.2483 / M.4493	4mm Allen key	18	47.7	0.79" (20)	0.45" (11.5)	7/8" (22)	1.17" (29.8)	2.24" (56.8)	1.30" (33)

* SCFM at 90 PSI with screw closed

REGULATEUR DE DEBIT

M-5



PRESSION DE TRAVAIL MAX

125 PSIG (863 kPa)

TEMPÉRATURE DE TRAVAIL

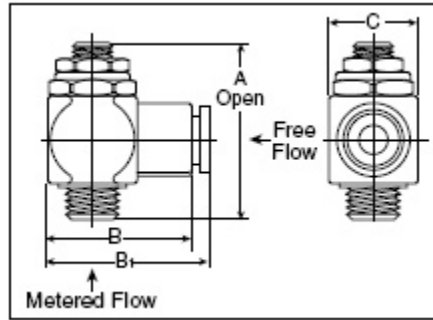
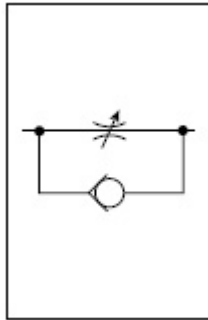
0°F A 140°F (-18°C A 60°C)

MATÉRIAUX

CORPS.....LAITON

PLONGEUR.....LAITON + ACETAL

JOINTS.....BUNA N



RÉGULATEUR DE DEBIT 90° CONNECTIONS FILET FEMELLE / FILET MALE - TUBE / FILET MALE

Model Number	Thread (NPT) Male	Thread (NPT) Female	A		B		C		Weight		Cv	
			Inches	mm	Inches	mm	Inches	mm	oz.	kg.	Adjusted Flow	Free Flow
M.0125	1/8	1/8	1.74	44	1.18	30	0.67	17	2.0	0.9	0.26	0.20
M.0250	1/4	1/4	1.99	51	1.40	36	0.91	23	4.5	2.0	0.75	0.68
M.0375	3/8	3/8	2.28	58	1.71	43	1.06	27	7.0	3.2	0.84	0.72
M.0500	1/2	1/2	2.69	68	1.98	53	1.26	32	11.0	5.0	1.64	1.41
With Prestolok Fittings	Thread (NPT)	Tube Size	A		B ₁		C		Weight		Cv	
M.1215	1/8	5/32	1.74	44	1.18	30	0.67	17	2.0	0.9	0.19	0.16
M.1225	1/8	1/4	1.74	44	1.18	30	0.67	17	2.0	0.9	0.28	0.22
M.2525	1/4	1/4	1.99	51	1.40	36	0.91	23	4.5	2.0	0.51	0.44
M.2538	1/4	3/8	1.99	51	1.40	36	0.91	23	4.5	2.0	0.62	0.53
M.3838	3/8	3/8	2.28	58	1.71	43	1.06	27	7.0	3.2	0.78	0.65



REGULATEUR DE DEBIT 1/8" A 3/4"

M-6



PRESSION DE TRAVAIL MAX

250 PSIG (1726 kPa)

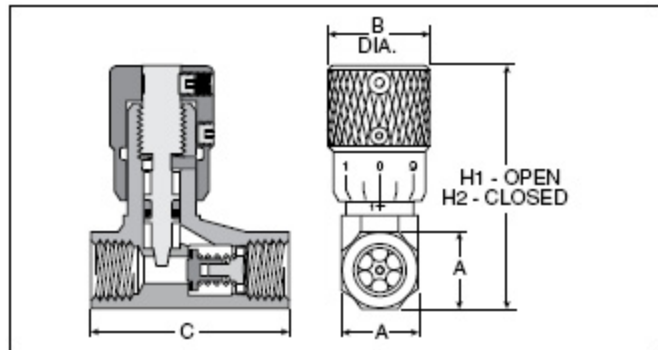
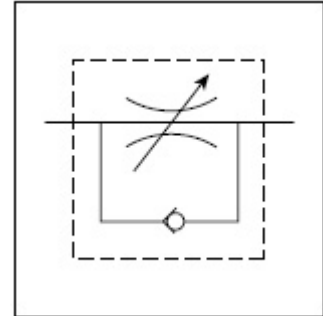
TEMPÉRATURE DE TRAVAIL

STANDARD 0°F A 180°F

OPTIONEL 0°F A 300°F

MATÉRIAUX

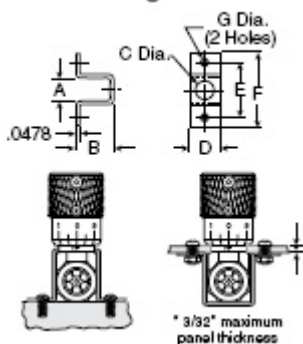
- CORPS**.....LAITON
- POINTEAU**.....LAITON + ACETAL
- JOINT CLAPET**.....URETHANE
- JOINT POINTEAU**.....BUNA N (OPTIONEL VITON)
- POIGNEE**.....ALUMINIUM
- RESSORT**.....ACIER INOX
- BARRURE**.....ACIER ZINGUÉ
- SET SCREW**.....ACIER



Port Size	Model	Flow (SCFM†)		Dimensions					Service Kit
		Adj.	Free Flow	A	B	C	H1	H2	
1/8"	M.1000	15	32	9/16"	0.75	1.47	2.03	1.81	M.8000
1/4"	M.1001	28	75	11/16"	0.75	1.47	2.28	2.03	M.8001
3/8"	M.1002	59	139	7/8"	0.88	2.31	2.84	2.53	M.8002
1/2"	M.1003	126	183	1-3/16"	1.06	3.25	3.62	3.22	M.8003
3/4"	M.1004	140	327	1-3/8"	1.06	3.25	3.72	3.31	M.8004

† At 100 PSIG inlet pressure with full pressure drop.

Mounting Bracket



Port Size	Mounting Bracket Model No.	Dimensions						
		A	B	C	D	E	F	G
1/8"	M.8100	0.66	0.66	0.505	0.75	1.38	1.88	0.22
1/4"	M.8101	0.75	0.89	0.505	0.75	1.50	2.00	0.22
3/8"	M.8102	0.94	1.12	0.630	1.25	1.75	2.31	0.27
1/2"	M.8103	1.25	1.62	0.755	1.75	2.06	2.62	0.27
3/4"	M.8104	1.44	1.72	0.755	1.75	2.25	2.81	0.27

REGULATEUR DE DEBIT 1/8" A 3/4"

M-7



PRESSION DE TRAVAIL MAX

250 PSIG (1726 kPa)

TEMPÉRATURE DE TRAVAIL

STANDARD 0°F A 180°F

OPTIONEL 0°F A 300°F

MATÉRIAUX

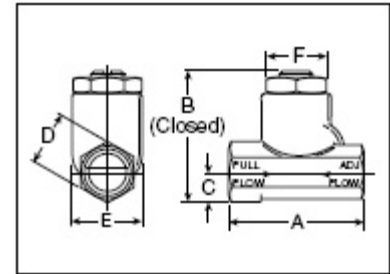
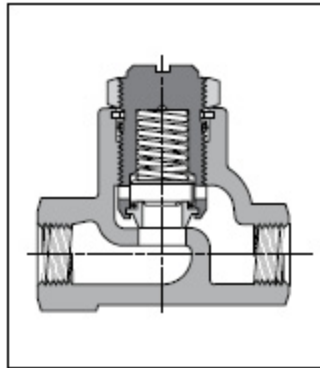
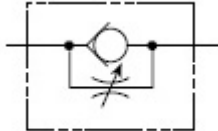
CORPS.....LAITON

COMPOSANTES INTERNES.....LAITON + ACIER INOX

JOINTS.....BUNA N (OPTIONEL VITON)

DÉBIT EN SCFM

Flow Path	Valve Port Size				
	1/8"	1/4"	3/8"	1/2"	3/4"
Maximum Flow in Metered Direction	70	130	220	295	420
Maximum Flow in Free Flow Direction	60	120	205	346	615



Model Number	M.0119		M.0219		M.0319		M.0419		M.0519	
Port Size NPTF	1/8"		1/4"		3/8"		1/2"		3/4"	
	Inches	mm	Inches	mm	Inches	mm	Inches	mm	Inches	mm
A	1.75	45	2.33	59	2.66	68	3.11	79	3.56	90
B	1.56	40	1.97	50	2.44	62	3.06	78	3.69	94
C	0.37	9	0.44	11	0.56	14	0.75	19	0.88	22
D	0.62	16	0.75	19	1.00	25	1.25	32	1.50	38
E	0.81	21	1.09	28	1.38	35	1.63	41	2.00	51
F	0.68	17	0.94	24	1.19	30	1.38	35	1.75	44

REGULATEUR DE DEBIT 1" A 1-1/2"

M-8

PRESSION DE TRAVAIL MAX

250 PSIG (1726 kPa)

TEMPÉRATURE DE TRAVAIL

STANDARD -40°F A 180°F

OPTIONEL -40°F A 350°F



MATÉRIAUX

CORPS.....ALUMINIUM

COMPOSANTES INTERNES.....LAITON + ALUMINIUM

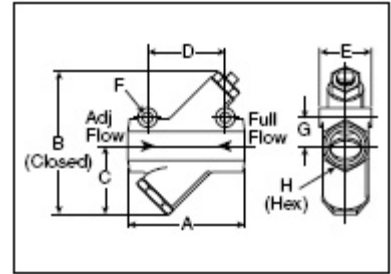
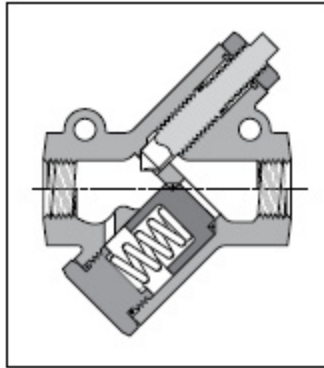
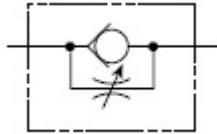
JOINTS.....BUNA N + URETHANE

RESSORT.....ACIER INOX

DÉBIT MAX. DIRECTION (FULL FLOW)

Port Size (NPTF)	Max. Flow (Needle Open)		Model Number
	SCFM**	C _v	
1	1000	12.3	M.5010
1-1/4	1200	13.8	M.5012
1-1/2	1800	17.5	M.5015

** At 100 PSIG inlet pressure with full pressure drop.



Model Number	M.5010		M.5012		M.5015	
Port Size NPTF	1"		1-1/4"		1-1/2"	
	Inches	mm	Inches	mm	Inches	mm
A	5.00	127	5.00	127	5.88	149
B	6.50	165	6.50	165	8.00	203
C	3.00	76	3.00	76	3.75	95
D	3.25	83	3.25	83	3.50	89
E	2.25	57	2.25	57	2.50	64
F	.39	10	.39	10	.39	10
G	1.31	33	1.31	33	1.50	38
H	2.13	54	2.13	54	2.38	60

REGULATEUR DE DEBIT BI-DIRECTIONNEL 1/8" A 3/4"

M-9



PRESSION DE TRAVAIL MAX

250 PSIG (1726 kPa)

TEMPÉRATURE DE TRAVAIL

STANDARD 0°F A 180°F

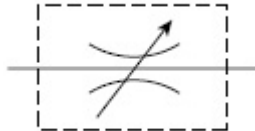
OPTIONEL 0°F A 300°F

MATÉRIAUX

CORPS.....LAITON

COMPOSANTES INTERNES.....LAITON + ACIER INOX

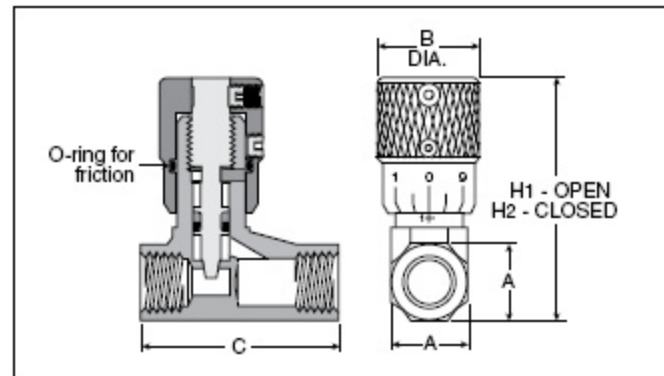
JOINTS.....BUNA N (OPTIONEL VITON)



DÉBIT

Model Number	Port Size	Flow (SCFM†)
M.7100	1/8"	15
M.7101	1/4"	28
M.7102	3/8"	59
M.7103	1/2"	126
M.7104	3/4"	140

† At 100 PSIG inlet pressure with full pressure drop.



Model Number	Port Size	Dimensions					Kit
		A	B	C	H1	H2	
M.7100	1/8"	9/16"	0.75	1.47	2.03	1.81	M.8000
M.7101	1/4"	11/16"	0.75	1.47	2.28	2.03	M.8001
M.7102	3/8"	7/8"	0.88	2.31	2.84	2.53	M.8002
M.7103	1/2"	1-3/16"	1.06	3.25	3.62	3.22	M.8003
M.7104	3/4"	1-3/8"	1.06	3.25	3.72	3.31	M.8004

CLAPET ANTI-RETOUR 1/8" A 3/4"

M-10



PRESSION DE TRAVAIL MAX

250 PSIG (1726 kPa) CRACKING 1 A 2 PSIG

TEMPÉRATURE DE TRAVAIL

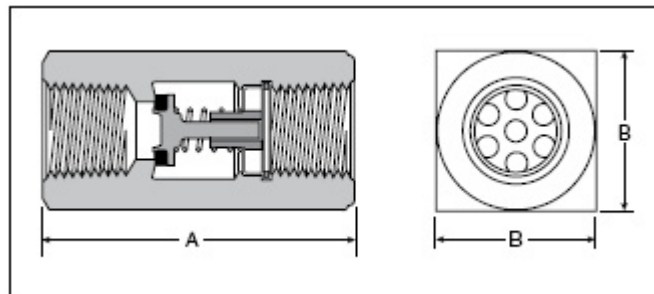
STANDARD 0°F A 180°F
OPTIONEL 0°F A 300°F

MATÉRIAUX

CORPS.....LAITON
COMPOSANTES INTERNES.....LAITON + ACIER INOX+ ACIER ZINGUÉ
JOINTS.....URETHANE (OPTIONEL VITON)



Model Number	Port Size	Flow† (SCFM)	Dimensions		Service Kit
			A	B	
M.3000	1/8"	35	1.22	0.56	M.8000
M.3001	1/4"	75	1.34	0.69	M.8001
M.3002	3/8"	143	2.00	0.88	M.8002
M.3003	1/2"	162	2.56	1.19	M.8003
M.3004	3/4"	323	2.66	1.38	M.8004

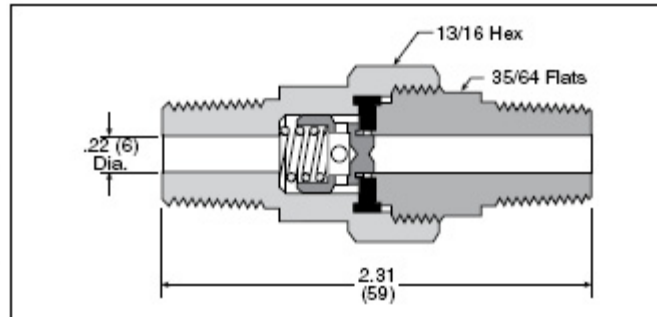


MATÉRIAUX

CORPS.....LAITON
COMPOSANTES INTERNES.....LAITON + ACIER INOX
JOINTS.....NITRILE



Model Number	Pipe Thread	Flow† (SCFM)
M.0099	1/4"	30



PRESSION DE TRAVAIL MAX

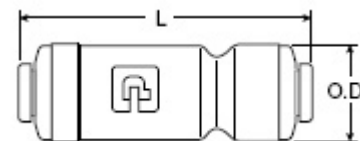
150 PSIG (863 kPa) CRACKING 1/3 PSIG

TEMPÉRATURE DE TRAVAIL

34°F A 150°F (1°C A 65°C)

MATÉRIAUX

CORPS.....ACETAL
JOINTS.....EPDM
GRIFFES.....ACIER INOX



Part No.	Tube Size	L	O.D.
M.4VC4	1/4	2.00	0.66
M.5VC5	5/16	2.10	0.70
M.6VC6	3/8	2.15	0.80

VALVES POUR RESERVOIR & BUSES GONFLAGE

M-11

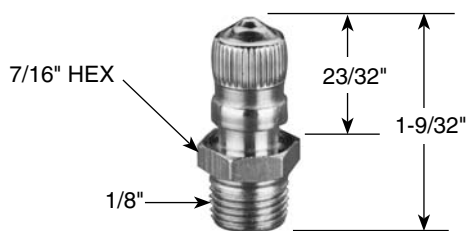


PRESSION DE TRAVAIL MAX

185 PSIG

TEMPÉRATURE DE TRAVAIL

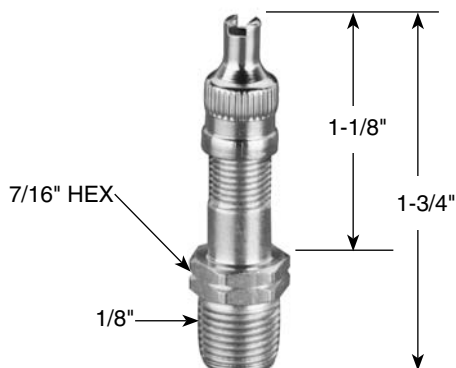
-40°F A 220°F



PIÈCE M.0010



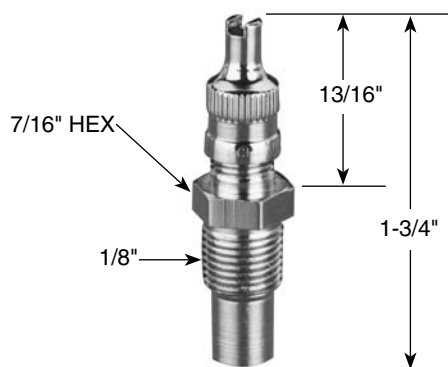
PIÈCE M.0013



PIÈCE M.0011



PIÈCE M.0014



PIÈCE M.0012

SILENCIEUX 1/8" A 1-1/2"

M-12

PRESSION DE TRAVAIL MAX

250 PSIG (AIR)

TEMPÉRATURE DE TRAVAIL

0°F A 300°F (AIR SEC)

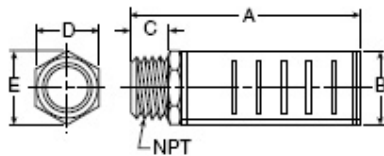


SILENCIEUX / FILTRE BRONZE POREUX

Model Number	Pipe Thread	Overall Length	Hex Size
M.7500	1/8"	1.00	7/16"
M.7501	1/4"	1.32	9/16"
M.7502	3/8"	1.54	11/16"
M.7503	1/2"	1.85	7/8"
M.7504	3/4"	2.29	1-1/6"
M.7505	1"	2.91	1-5/16"
M.7506	1-1/4"	3.25	1-11/16"
M.7507	1-1/2"	3.69	2"

SILENCIEUX AJUSTABLES

Model Number	Pipe Thread	Overall Length	Hex Size
M.7541	1/8"	1.15	9/16"
M.7542	1/4"	1.42	1/2"
M.7543	3/8"	1.49	11/16"
M.7544	1/2"	1.77	7/8"
M.7545	3/4"	1.98	1-1/16"
M.7546	1"	2.15	1-5/16"



SILENCIEUX / FILTRE LAITON POREUX

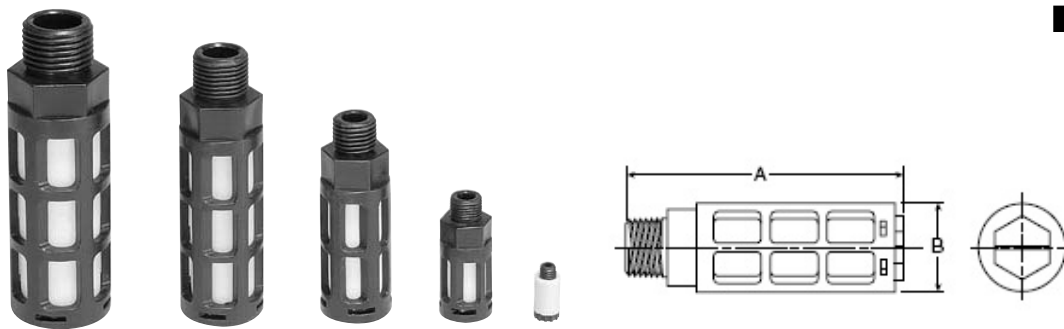
Model Number	Pipe Thread	Overall Length	Hex Size
M.7510	1/8"	0.44	7/16"
M.7511	1/4"	0.63	9/16"
M.7512	3/8"	0.75	11/16"
M.7513	1/2"	0.88	7/8"
M.7514	3/4"	1.00	1-1/6"
M.7515	1"	1.31	1-5/16"
M.7516	1-1/4"	1.41	1-11/16"
M.7517	1-1/2"	1.50	2"

SILENCIEUX HAUT RENDEMENT

Model Numbers		Pipe Thread	Flow SCFM @ 100 PSIG Inlet	Dimensions				
NPTF	BSPT (R)			A	B	C	D	E
M.7520	M.7530	1/8"	115	2.31	0.62	0.31	0.68	5/8"
M.7521	M.7531	1/4"	129	2.41	0.88	0.50	0.97	7/8"
M.7522	M.7532	3/8"	219	3.06	1.25	0.50	1.38	1-1/4"
M.7523	M.7533	1/2"	549	3.19	1.25	0.64	1.38	1-1/4"
M.7524	M.7534	3/4"	893	4.69	1.50	0.66	1.62	1-1/2"
M.7525	M.7535	1"	1,013	4.69	1.50	0.81	1.62	1-1/2"
M.7526	M.7536	1-1/4"	1,486	5.69	2.88	1.25	—	—
M.7527	M.7537	1-1/2"	1,580	5.69	2.88	1.25	—	—

SILENCIEUX 1/8" A 1"

M-13



SILENCIEUX PLASTIQUE ÉLÉMENT POLYÉTHYLÈNE

Part Number		Thread Size	A (mm)	B (mm)	Maximum Flow (SCFM) 100 PSIG Inlet	Sound Pressure Level (dBA)	
NPT	BSPT					20 PSIG Inlet	100 PSIG Inlet
M.7551		M5	0.43 (11)	0.32 (8)	15	69	79
M.7552	M.7556	1/8"	1.57 (40)	0.63 (16)	51	69	81
M.7553	M.7557	1/4"	2.56 (65)	0.83 (21)	124	67	84
M.7554	M.7558	3/8"	3.35 (85)	0.98 (25)	247	83	98
M.7555	M.7559	1/2"	3.74 (95)	1.18 (30)	370	69	96

PRESSION DE TRAVAIL MAX

150 PSIG (AIR)

TEMPÉRATURE DE TRAVAIL

14°F A 140°F (-10°C A 60°C)



SILENCIEUX PLASTIQUE MÉTRIQUE

Port Thread	A	Diameter B	C	Weight (grams)	Part Number
M5	0.91 (23)	0.26 (6,5)	0.16 (4)	0.01	M.7560
G1/8	1.14 (29)	0.55 (14)	0.24 (6)	0.02	M.7561
G1/4	1.34 (34)	0.67 (17)	0.24 (6)	0.04	M.7562
G3/8	2.36 (60)	0.98 (25)	0.35 (9)	0.06	M.7563
G1/2	2.52 (64)	0.98 (25)	0.43 (11)	0.10	M.7564
G3/4	5.51 (140)	1.50 (38)	0.55 (14)	0.50	M.7565
G1	6.30 (160)	1.89 (48)	0.79 (20)	0.62	M.7566

PRESSION DE TRAVAIL MAX

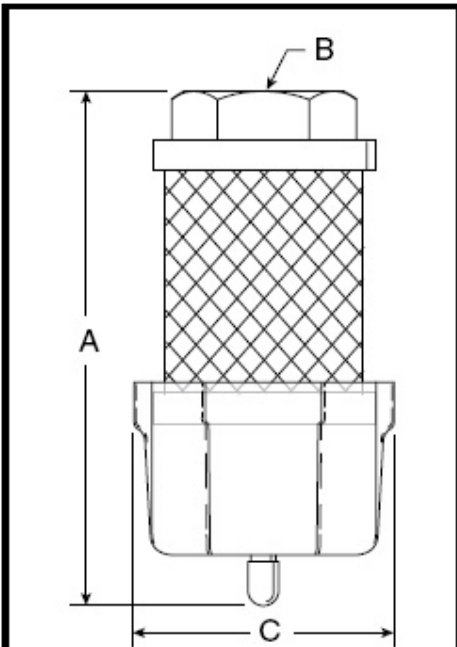
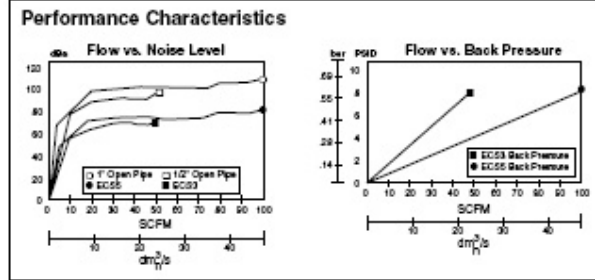
246 PSIG (17 bar 1700 kPa)

TEMPÉRATURE DE TRAVAIL

14°F A 176°F (-10°C A 80°C)

SILENCIEUX SEPARATEUR HUILE 1/2" & 1"

M-14



Dimensions:

Model	A	B	C
M.ECS3	5.30 (135 mm)	1/2" NPT	2.57 (65 mm)
M.ECS5	7.30 (185mm)	1" NPT	2.57 (65mm)

PRESSION DE TRAVAIL MAX

100 PSIG (6,8 bar)

TEMPÉRATURE DE TRAVAIL

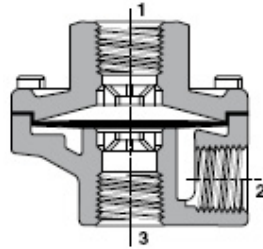
125°F MAXIMUM

SPÉCIFICATIONS

- ENLÈVE L'HUILE A 99.97%
- RÉDUCTION DE BRUIT DE 25 dBA
- POSSIBILITÉ DE DRAIN 1/4" EXTERNE
- CAGE DE RETENUE EN METAL
- ÉCHAPPEMENT RAPIDE
- DÉPASSE LES NORMES O.S.H.A.
- CHOIX ENVIRONNEMENTAL

SILENCIEUX ECHAPPEMENT RAPIDE (QUICK EXHAUST)

M-15



MATÉRIAUX

CORPS.....ALUMINIUM

PRESSION DE TRAVAIL

3 A 150 PSIG

50 A 200 PSIG diaphragm PTFE

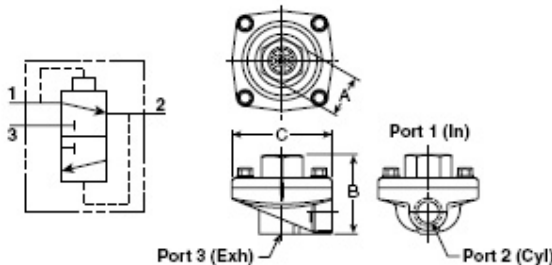
TEMPÉRATURE DE TRAVAIL

URETHANE 0°F A 180°F (-18°C A 80°C)

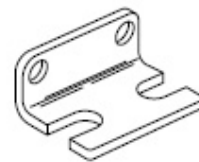
NITRILE 0°F A 180°F (-18°C A 80°C)

VITON 0°F A 400°F (-18°C A 205°C)

PTFE 0°F A 500°F (-18°C A 260°C)



BRAQUETTE DE MONTAGE INCLUANT 2 BOULONS



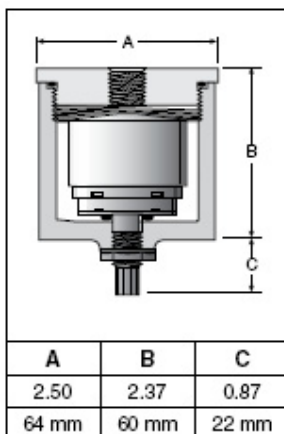
M.8500

DISPONIBLE POUR LES MODÈLES DONT LE RECTANGLE VERT APPARAÎT

Port			Flow (SCFM*)	Model Number		A	B	C	Service Kit No.	
1	2	3		NPTF	BSPP "G"					
STANDARD URETHANE DIAPHRAGMS (Nitrile static seals)										
1/8"	1/8"	1/8"	70	M.8510	M.8518	7/8" Sq.	1.75	1.88	M.8551	M.8500
	1/8"	1/4"	70	M.8511	M.8519	7/8" Sq.	1.75	1.88	M.8551	M.8500
1/4"	1/4"	1/4"	90	M.8512	M.8520	7/8" Sq.	1.75	1.88	M.8551	M.8500
	1/4"	3/8"	150	M.8513	M.8521	1" Hex	2.06	2.44	M.8552	
	3/8"	3/8"	240	M.8514	—	1" Hex	2.06	2.44	M.8552	
3/8"	3/8"	3/8"	240	M.8515	M.8522	1" Hex	2.06	2.44	M.8552	
1/2"	1/2"	1/2"	450	M.8516	M.8523	1-1/2" Hex	2.88	3.38	M.8553	
3/4"	3/4"	3/4"	550	M.8517	M.8524	1-1/2" Hex	2.88	3.38	M.8553	
NITRILE DIAPHRAGMS (Nitrile static seals)										
1/4"	1/4"	3/8"	90	M.8525	M.8528	7/8" Sq.	1.75	1.88	M.8554	M.8500
3/8"	3/8"	3/8"	240	M.8526	M.8529	1" Hex	2.06	2.44	M.8554	
3/4"	3/4"	3/4"	550	M.8527	M.8530	1-1/2" Hex	2.88	3.38	M.8555	
FLUOROCARBON DIAPHRAGMS for extended temperature operation (Fluorocarbon static seals)										
1/8"	1/8"	1/8"	70	M.8531	M.8537	7/8" Sq.	1.75	1.88	M.8556	M.8500
	1/8"	1/4"	70	M.8532	M.8538	7/8" Sq.	1.75	1.88	M.8556	M.8500
1/4"	1/4"	1/4"	90	M.8533	M.8539	7/8" Sq.	1.75	1.88	M.8556	M.8500
3/8"	3/8"	3/8"	240	M.8534	M.8540	1" Hex	2.06	2.44	M.8557	
1/2"	1/2"	1/2"	450	M.8535	M.8541	1-1/2" Hex	2.88	3.38	M.8558	
3/4"	3/4"	3/4"	550	M.8536	M.8542	1-1/2" Hex	2.88	3.38	M.8558	
PTFE DIAPHRAGMS for higher pressure and temperature (Fibre static seals)										
3/8"	3/8"	3/8"	240	M.8543	M.8544	1" Hex	2.06	2.44	M.8559	

DRAIN AUTOMATIQUE MECANIQUE ET ELECTRIQUE

M-16



PORT DRAIN 1/8" NPT

MATÉRIAUX

CORPS.....ALUMINIUM
JOINTS.....BUNA N

PRESSION DE TRAVAIL MAX

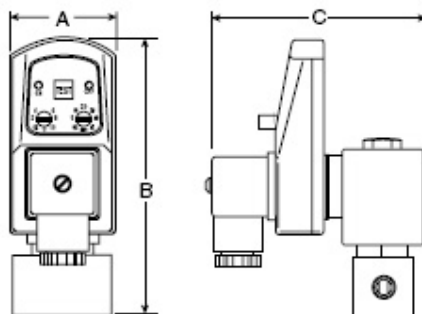
20 A 250 PSIG (0 A 17.2 bar)

TEMPÉRATURE DE TRAVAIL

32°F A 175°F (0°C A 80°C)

DRAIN AUTOMATIQUE MÉCANIQUE

Model No.	Size
M.7570	1/4"
M.7571	1/2"



MATÉRIAUX

CORPS VALVE.....LAITON + INOX
BOITIER(NEMA 4).....ABS PLASTIQUE
CORPS.....ALUMINIUM
PIÈCES INTERNES.....LAITON + INOX
JOINTS.....VITON

PRESSION DE TRAVAIL MAX

230 PSIG (15.9 bar)

TEMPÉRATURE DE TRAVAIL

34°F A 130°F (1.1°C A 54°C)

DRAIN AUTOMATIQUE AJUSTABLE ÉLECTRIQUE

# PIÈCE	PORT NPT	VOLTAGE	A	B	C
M.7580	1/4"	120V AC	1.73"	4.53"	3.46"
M.7581	1/4"	240V AC	1.73"	4.53"	3.46"
M.7582	1/4"	24V DC	1.73"	4.53"	3.46"
M.7583	3/8"	120V AC	1.73"	4.53"	3.46"
M.7584	3/8"	240V AC	1.73"	4.53"	3.46"
M.7585	3/8"	24V DC	1.73"	4.53"	3.46"
M.7586	1/2"	120V AC	1.73"	4.53"	3.46"
M.7587	1/2"	240V AC	1.73"	4.53"	3.46"
M.7588	1/2"	24V DC	1.73"	4.53"	3.46"

SPÉCIFICATIONS

TEMPS OUVERT .5 A 10 SEC
TEMPS CYCLE .5 SEC A 45 MIN
BOBINE CLASSE H 340°F (171.1°C)
POIDS..... 1.8LB (0.8 kg)

DRAIN AUTOMATIQUE ELECTRIQUE SANS PERTE D'AIR

M-17



TEMPÉRATURE DE TRAVAIL

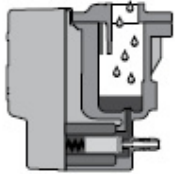
33°F A 140°F (0°C A 60°C)

PRESSION DE TRAVAIL MAX

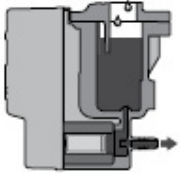
232 PSIG (16 bar)

SPÉCIFICATIONS

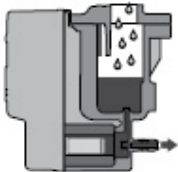
- PAS DE PERTE D'AIR
- 110 A 240 V 50/60 Hz AUTOMATIQUE
- SENSOR SANS ENTRETIEN
- CONTROLE ÉLECTRONIQUE
- ALARME AVEC CONTACT
- PORT ENTRÉE 1/2" NPT
- BOUTON TEST MANUEL
- ÉCONOMISEUR ÉNERGÉTIQUE
- LONGUE DURÉE DE VIE
- MAINTENANCE MINIME
- OPÉRATION SUR DEMANDE



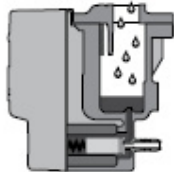
LE DRAIN ACCUMULE LA CONDENSATION LA VALVE DE DRAINAGE EXTERNE FERMÉE EN ATTENTE QUE LE NIVEAU ATTEIGNE LE SENSOR



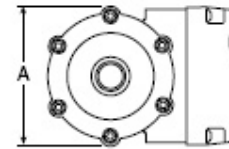
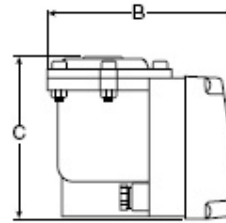
LE NIVEAU DE CONDENSATION EST DÉTECTÉ PAR LE SENSOR ET LA VALVE DE DRAINAGE EST OUVERTE POUR LE TEMPS RÉGLÉ



LA CONDENSATION S'ÉVACUE PAR LA PRESSION D'AIR DU SYSTÈME



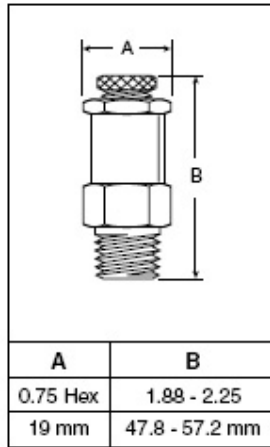
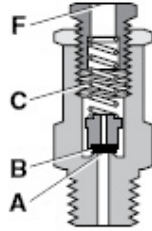
LE TEMPS D'OUVERTURE DOIT ÊTRE RÉGLÉ DE FAÇON A TOUJOURS LAISSER DU LIQUIDE DANS LE RÉSERVOIR CAR C'EST LE LIQUIDE QUI EMPÊCHE L'AIR DE S'ÉCHAPPER



Model Number	A	D	C
M.0400	3.23 (82)	4.61 (117)	4.65 (118)

SOUPAPES DE SECURITE

M-18



Lorsque la pression appliquée en A est plus grande que la force du ressort C le plongeur B se soulève pour laisser la pression excédante s'échapper en F

MATÉRIAUX

CORPS ET NOIX.....ALUMINIUM
 NOIX DE BLOCAGE.....ACIER
 SIÈGE STD.....BUNA N
 OPTIONEL.....VITON
 PLONGEUR.....PLASTIC

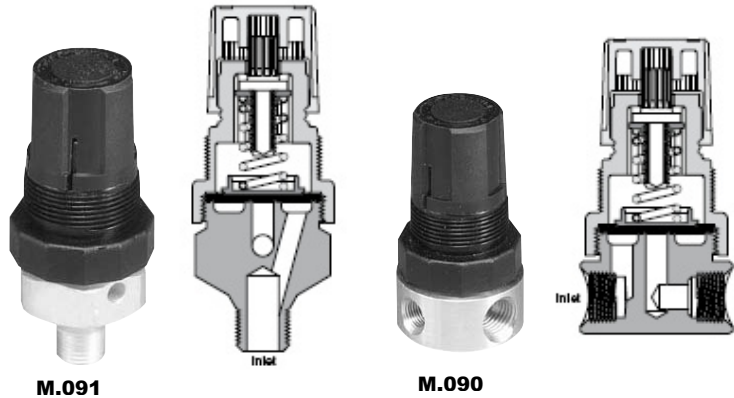
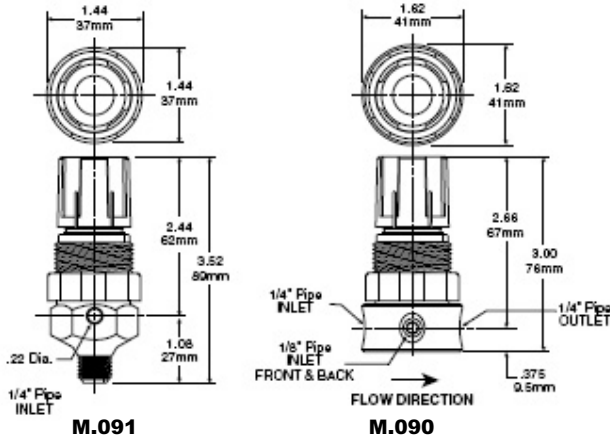
TEMPÉRATURE DE TRAVAIL

32°F A 200°F (0°C A 93°C) BUNA N

SOUPAPE DE SÉCURITÉ PRÉRÉGLER

OPTION VITON AJOUTER LE SUFFIXE .V EXEMPLE M.0800.V
 D'AUTRES PRESSION DISPONIBLES SUR COMMANDE

# PIECE	PRESSION
M.0800	50 PSI
M.0810	75 PSI
M.0820	115 PSI
M.0830	125 PSI
M.0840	140 PSI
M.0850	155 PSI
M.0860	163 PSI
M.0865	175 PSI
M.0870	190 PSI
M.0880	200 PSI



MATÉRIAUX

POIGNÉE D'AJUSTEMENT.....POLYPROPYLENE
 ÉCROU D'AJUSTEMENT.....ACIER ZINGUÉ
 CORPS M.091.....ALUMINIUM
 CORPS M.090.....LAITON
 DIAPHRAGM.....BUNA N
 NOIX.....ACIER CHROMÉ
 CAGE DU RESSORT.....ACÉTAL
 RESSORT.....ACIER ZINGUÉ

SOUPAPE DE SÉCURITÉ AJUSTABLE

# PIECE	# PIECE	GAMME DE PRESSION
M.0902	M.0912	0-15 PSI
M.0904	M.0914	0-25 PSI
M.0906	M.0916	0-50 PSI
M.0908	M.0918	0-100 PSI

M.0920 ÉCROU POUR MONTAGE PANNEAU

PRESSION DE TRAVAIL MAX

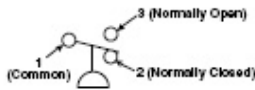
PRESSION D'ENTRÉE MAX.....300 PSIG (20.7 bar)

TEMPÉRATURE DE TRAVAIL

40°F A 120°F (4°C A 49°C)

INTERRUPTEUR DE PRESSION (PRESSURE SWITCH)

M-19



TEMPÉRATURE DE TRAVAIL

-40°F A 180°F (-40°C A 80°C)

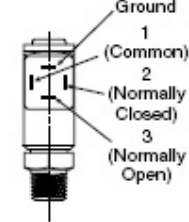
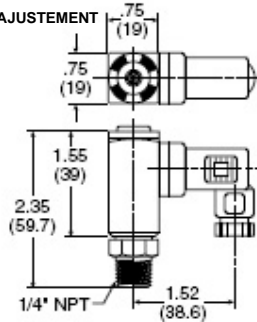
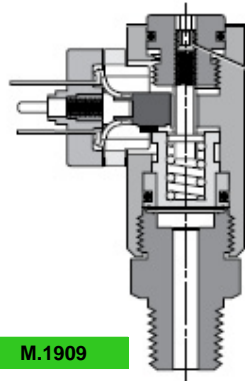


PRESSION D'ENTRÉE MAX

300 PSIG (20 bar)



M.1909



MATÉRIAUX

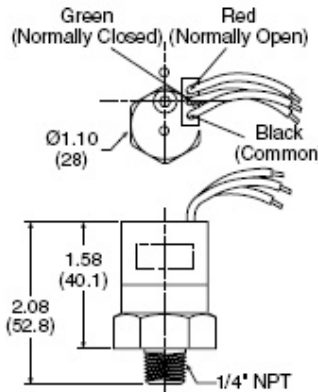
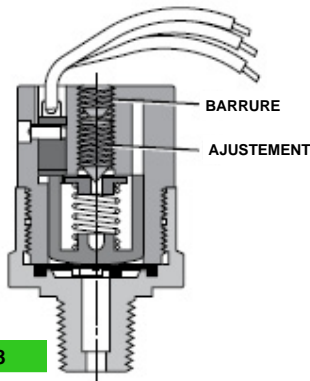
CORPS.....ALUMINIUM ANODIZÉ
DIAPHRAGM.....NITRILE

SPÉCIFICATIONS

- 5 AMP 12/24VDC 125/250VAC
- VIE + OU - 1 000 000 CYCLES
- CONNECTION DIN 43650HCM
- PROTECTION ÉLECTRIQUE IP65
- RÉPÉTABILITÉ + OU - 2% A 20°C



M.1908

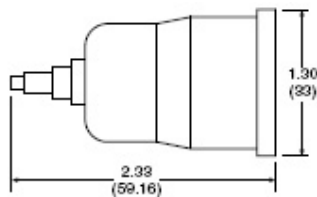


MATÉRIAUX

CORPS.....LAITON
DIAPHRAGM.....NITRILE

SPÉCIFICATIONS

- 5 AMP 12/24VDC 125/250VAC
- VIE + OU - 2 000 000 CYCLES
- CONNECTION FILS 18"
- PROTECTION ÉLECTRIQUE IP65
- RÉPÉTABILITÉ + OU - 2% A 20°C



PROTECTEUR CAOUTCHOUC

TEMPÉRATURE DE TRAVAIL

-40°F A 220°F (-40°C A 105°C)

PRESSION D'ENTRÉE MAX

300 PSIG (20 bar)



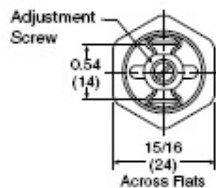
M.4159

NORMALEMENT FERMÉE



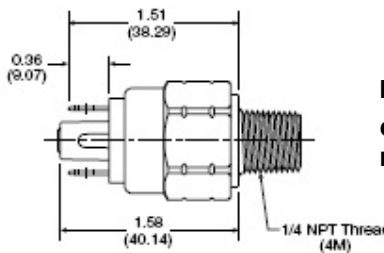
M.4160

NORMALEMENT OUVERT



M.4161

PROTECTEUR CAOUTCHOUC



MATÉRIAUX

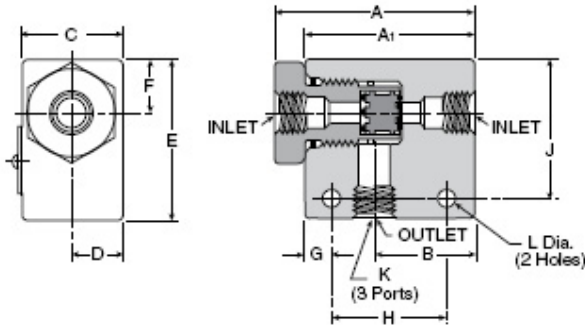
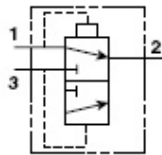
CORPS.....LAITON
DIAPHRAGM.....KAPTON

SPÉCIFICATIONS

- 4 AMP 12VDC
- VIE + OU - 2 000 000 CYCLES
- CONNECTION 1/4 X 1/32
- RÉPÉTABILITÉ + OU - 5% A 20°C

SELECTEUR DE CIRCUIT TYPE " OU "

M-20



MATÉRIAUX

CORPS.....ALUMINIUM

COMP. INT.....ALUMINIUM

JOINTS.....NITRILE

PRESSION DE TRAVAIL

MAXIMUM.....200 PSIG

MINIMUM.....3 PSIG

TEMPÉRATURE DE TRAVAIL

0°F A 160°F

Model Number	Port Size	Flow (Cv)
M.0700	1/8"	0.32
M.0701	1/4"	1.65
M.0702	3/8"	2.02

Model Number	Port Size	Dimensions											
		A	A1	B	C	D	E	F	G	H	J	K	L
M.0700	1/8"	N/A	1.62	0.81	0.62	0.31	1.00	0.281	0.312	1.00	0.75	1/8 - 27	0.219
M.0701	1/4"	2.50	2.12	1.25	1.25	0.62	2.00	0.67	0.265	1.25	1.35	1/4 - 18	0.219
M.0702	3/8"	2.50	2.12	1.25	1.25	0.62	2.00	0.67	0.265	1.25	1.35	3/8 - 16	0.219