

# CYLINDRES PNEUMATIQUES INOX

E-1



## MATÉRIAUX

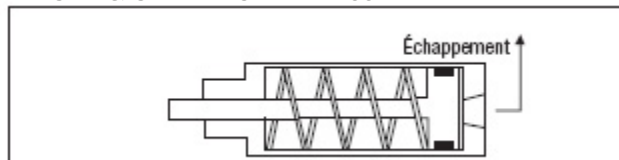
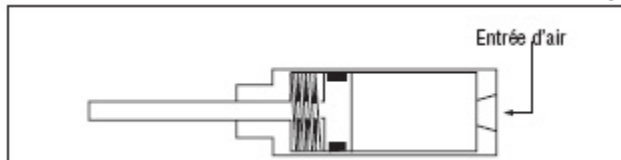
TUBE.....INOX 304  
 PISTON 1-1/2 & -SDT....INOX 304  
 TÊTE.....ALUMINIUM  
 CAP.....ALUMINIUM  
 JOINTS.....BUNA N  
 JOINTS OPTIONELS.....VITON

## PRESSION NOMINALE

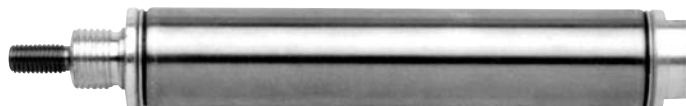
SÉRIE SR & SRM.....250 PSI  
 SÉRIE SRD & SRDM.....100 PSI

## TEMPÉRATURE STANDARD

SÉRIE SR.....-10°F A +165°F  
 SÉRIE SRM.....+14°F A +140°F  
 SÉRIE SRD & SRDM...+32°F A +160°F

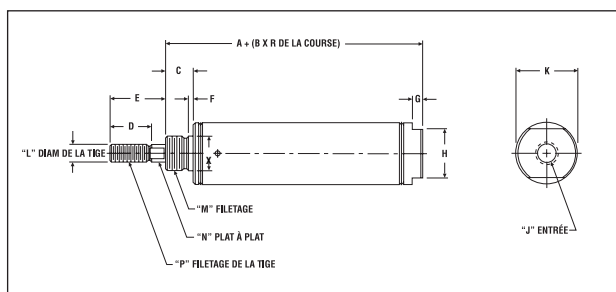


## SIMPLE ACTION MONTAGE À L'AVANT



ALÉSAGE DISPONIBLE ÉGALEMENT  
 5/16" - 7/16" - 9/16" - 7/8" - 1-3/4" - 2"

### SÉRIE SR STYLE N

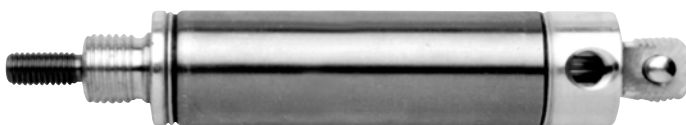


Course po	Diam. d'alésage ⊖			
	3/4"	1 1/16"	1 1/4"	1 1/2"
1"	No prod.	No prod.	No prod.	No prod.
2"	E.0401	E.0501	E.0601	E.0701
3"	E.0403	E.0503	E.0603	E.0703
4"	E.0405	E.0505	E.0605	E.0705
4"	E.0407	E.0507	E.0607	E.0707

## DIMENSIONS (POUCES)

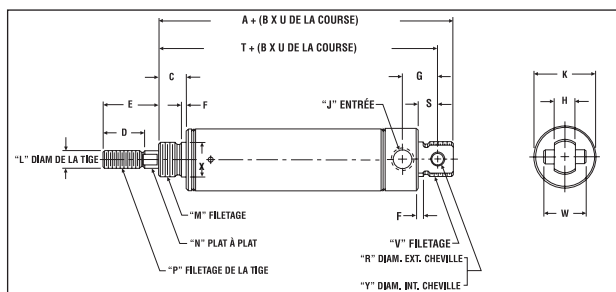
⊖ Diam. d'alé. A	B	C	D	E	F	G	H	J (NPT)	K	L	M	N	P	R	
3/4	1.50	1.68	0.43	0.50	0.50	0.05	0.18	0.62	1/8	0.81	0.25	1/2-20	0.21	1/4-28	1.00
1 1/16	1.93	1.56	0.50	0.75	0.50	0.06	0.18	0.87	1/8	1.12	0.31	5/8-18	0.25	3/16-24	1.00
1 1/4	2.40	1.81	0.62	0.75	1.00	0.09	0.18	0.87	1/8	1.34	0.43	3/4-16	0.37	7/16-20	1.00
1 1/2	2.18	1.68	0.62	0.75	1.00	0.09	0.25	0.87	1/8	1.56	0.43	3/4-16	0.37	7/16-20	1.00

## SIMPLE ACTION MONTAGE UNIVERSEL



ALÉSAGE DISPONIBLE ÉGALEMENT  
 7/16" - 9/16" - 7/8" - 1-3/4"

### SÉRIE SR STYLE NRP



Course po	Diam. d'alésage ⊖			
	3/4"	1 1/16"	1 1/4"	1 1/2"
1"	No prod.	No prod.	No prod.	No prod.
2"	E.0421	E.0521	E.0621	E.0721
3"	E.0423	E.0523	E.0623	E.0723
4"	E.0425	E.0525	E.0625	E.0725
4"	E.0427	E.0527	E.0627	E.0727

## DIMENSIONS (POUCES)

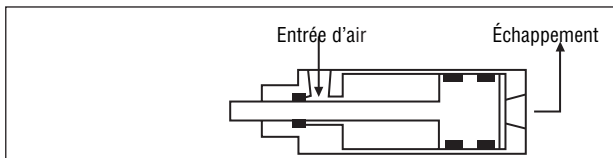
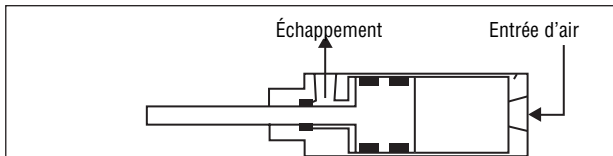
⊖ Diam. d'alé. A	B	C	D	E	F	G	H	J (NPT)	K	L	M	N	P	R	S	T	U	V	W	
3/4	2.56	1.68	0.43	0.50	0.50	0.05	0.62	0.37	1/8	0.86	0.25	1/2-20	0.21	1/4-28	0.25	0.34	2.28	1.00	5/8-18	0.75
1 1/16	2.81	1.56	0.50	0.50	0.50	0.06	0.62	0.37	1/8	1.12	0.31	5/8-18	0.25	3/16-24	0.25	0.34	2.53	1.00	5/8-18	0.75
1 1/4	3.53	1.81	0.62	0.75	1.00	0.09	0.71	0.50	1/8	1.34	0.43	3/4-16	0.37	7/16-20	0.25	0.40	3.12	1.00	3/4-16	0.87
1 1/2	3.25	1.68	0.62	0.75	1.00	0.09	0.81	0.62	1/8	1.56	0.43	3/4-16	0.37	7/16-20	0.37	0.50	2.87	1.00	-	1.00

PLUSIEURS OPTIONS ET MODÈLES  
SONT DISPONIBLES VOIR PAGE E-5

ALÉSAGE DISPONIBLE ÉGALEMENT

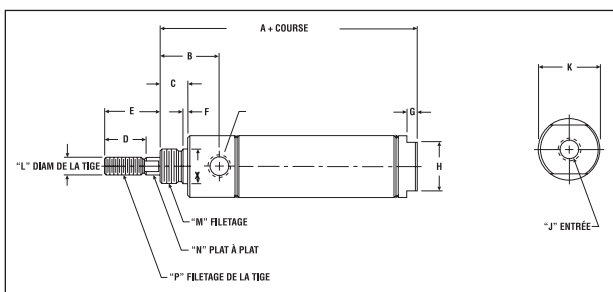
5/16" - 7/16" - 9/16" - 7/8" - 1-3/4" - 2-1/2" - 3"

## DOUBLE ACTION MONTAGE À L'AVANT



SÉRIE SR STYLE D

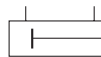
Course po	Diam. d'alésage ⊖				
	3/4"	1 1/16"	1 1/4"	1 1/2"	2"
	No prod.	No prod.	No prod.	No prod.	No prod.
1	E.0441	E.0541	E.0641	E.0741	E.0961
2	E.0443	E.0543	E.0643	E.0743	E.0963
3	E.0445	E.0545	E.0645	E.0745	E.0965
4	E.0447	E.0547	E.0647	E.0747	E.0967
5	E.0449	E.0549	E.0649	E.0749	E.0969
6	E.0451	E.0551	E.0651	E.0751	E.0971
8	E.0453	E.0553	E.0653	E.0753	E.0973
10	E.0455	E.0555	E.0655	E.0755	E.0975
12	E.0457	E.0557	E.0657	E.0757	E.0977



### DIMENSIONS (POUCES)

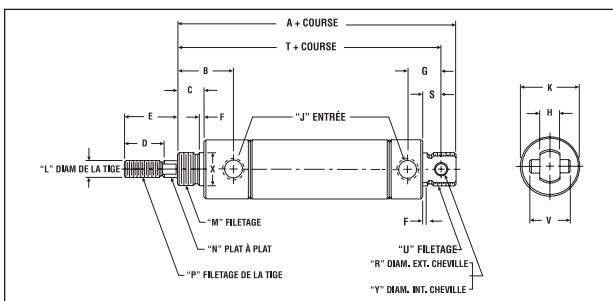
⊖ Diam. d'alé.	A	B	C	D	E	F	G	H	J (NPT)	K	L	M	N	P
3/4	2.96	0.96	0.43	0.50	0.50	0.06	0.18	0.62	1/8	0.86	0.25	5/16-18	0.21	1/4-28
1 1/16	3.12	1.06	0.50	0.50	0.50	0.09	0.18	0.87	1/8	1.12	0.31	5/16-18	0.25	5/16-24
1 1/4	3.75	1.18	0.62	0.75	1.00	0.09	0.18	0.87	1/8	1.34	0.43	3/4-16	0.37	7/16-20
1 1/2	3.43	1.25	0.62	0.75	1.00	0.09	0.25	0.87	1/8	1.56	0.43	3/4-16	0.37	7/16-20
2	4.31	1.50	0.81	0.87	1.25	0.10	0.25	1.25	1/4	2.09	.62	1 1/4-12	.56	1/2-20

## DOUBLE ACTION MONTAGE UNIVERSEL



SÉRIE SR STYLE DXP

Course po	Diam. d'alésage ⊖				
	3/4"	1 1/16"	1 1/4"	1 1/2"	2"
	No prod.	No prod.	No prod.	No prod.	No prod.
1	E.0461	E.0561	E.0661	E.0761	E.0861
2	E.0463	E.0563	E.0663	E.0763	E.0863
3	E.0465	E.0565	E.0665	E.0765	E.0865
4	E.0467	E.0567	E.0667	E.0767	E.0867
5		E.0569	E.0669	E.0769	E.0869
6		E.0571	E.0671	E.0771	E.0871
8		E.0573	E.0673	E.0773	E.0873
10		E.0575	E.0675	E.0775	E.0875
12		E.0577	E.0677	E.0777	E.0877

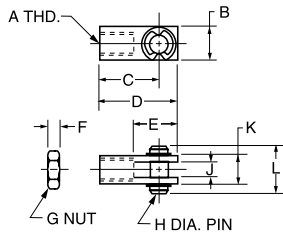


### DIMENSIONS (POUCES)

⊖ Diam. d'alé.	A	B	C	D	E	F	G	H	J (NPT)	K	L	M	N	P	R	S	T	U	V	W
3/4	4.03	0.96	0.50	0.50	0.50	0.06	0.62	0.37	1/8	0.86	0.25	5/16-18	0.21	1/4-28	0.25	.34	3.75	5/16-18	0.75	--
1 1/16	4.00	1.06	0.50	0.50	0.50	0.06	0.62	0.37	1/8	1.12	0.31	5/16-18	0.25	5/16-24	0.25	.34	3.71	5/16-18	0.75	--
1 1/4	4.87	1.18	0.62	0.75	1.00	0.09	0.71	0.50	1/8	1.34	0.43	3/4-16	0.37	7/16-20	0.25	.40	4.46	3/4-16	0.87	--
1 1/2	4.50	1.25	0.62	0.75	1.00	0.09	0.81	0.62	1/8	1.56	0.43	3/4-16	0.37	7/16-20	0.37	.50	4.12	◇	1.00	--
2	5.68	1.50	0.81	0.87	1.25	0.10	0.93	0.75	1/4	2.09	.62	1 1/4-12	0.56	1/2-20	-	.56	5.25	1 1/4-12	0.37	0.37

◇ 1.00" diamètre non-fileté

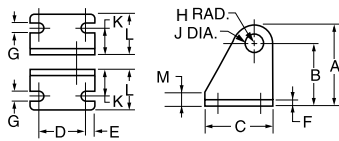
### CLÉVIS POUR TIGE



Part Number	Bore	A	B	C	D	E	F	G	H	J	K	L
E.0048	5/16	#5-40	.31	.44	.56	.38	.11	#5-40	.12	.13	.31	.50
E.0049 E.0049.S	7/16, 9/16	#10-32	.38	.75	.94	.56	.12	#10-32	.19	.19	.38	.56
E.0050 E.0050.S	3/4, 7/8	1/4-28	.50	.94	1.19	.68	.16	1/4-28	.25	.25	.50	.69
E.0055 E.0055.S	1-1/16	5/16-24	.50	.94	1.19	.68	.19	5/16-24	.25	.25	.50	.69
E.0060 E.0060.S	1-1/4, 1-1/2	7/16-20	.75	1.31	1.69	.94	.25	7/16-20	.38	.38	.75	1.03
E.0065 E.0065.S	1-3/4, 2, 2-1/2	1/2-20	.75	1.31	1.69	.94	.31	1/2-20	.38	.38	.75	1.03
E.0066	3	5/8-18	1.00	2.25	2.75	1.50	.38	5/8-18	.50	.50	1.00	1.38

**.S = ACIER INOX**

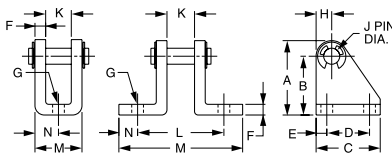
### BRAQUETTE PIVOT



Part Number	Bore	A	B	C	D	E	F	G	H	J	K	L	M
E.0131	7/16	.76	.56	.75	.50	.12	.06	.19	.20	.160	.28	.50	.12
E.0132	3/4, 7/8, 1-1/16	1.19	.88	1.12	.75	.19	.12	.27	.31	.255	.44	.81	.25
E.0133	1-1/2	1.75	1.38	1.50	1.00	.25	.12	.27	.38	.380	.62	1.00	.25

### BRAQUETTE PIVOT KIT

PIN ET BARRURES INCLUSES

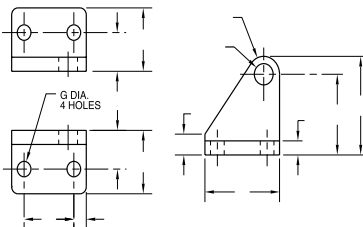


5/16" Bore Only

Part Number	Bore	A	B	C	D	E	F	G	H	J	K	L	M	N
E.0033	5/16	.53	.40	.62	.38	.12	.04	.16	.12	.12	.26	-	.36	.18
E.0034 E.0034.S	7/16, 9/16	.76	.56	.75	.50	.12	.06	.19	.19	.156	.34	.91	1.34	.22
E.0035 E.0035.S	3/4, 7/8, 1-1/16	1.18	.88	1.12	.75	.19	.12	.27	.30	.250	.38	1.25	2.00	.38
E.0036	1-1/4	1.18	.88	1.12	.75	.19	.12	.27	.30	.250	.50	1.38	2.14	.38
E.0040 E.0040.S	1-1/2, 1-3/4	1.75	1.38	1.50	1.00	.25	.25	.27	.37	.375	.62	2.00	2.88	.44
E.0045 E.0045.S	2, 2-1/2	1.75	1.38	1.50	1.00	.25	.25	.27	.37	.375	.75	2.12	3.00	.44
E.0046	3	2.25	1.75	1.75	1.25	.25	.25	.27	.50	.50	.88	2.62	3.88	.62

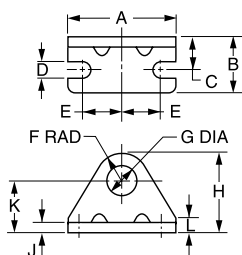
**.S = ACIER INOX**

### BRAQUETTE TRUNNION (SR SÉRIE)



Part Number	Bore Sizes	A	B	C	D	E	F	G	H	J	K	L	M
E.0110	7/16	1.75	1.38	1.50	1	.25	.25	.27	.38	.375	.69	1.12	.37
E.0115	3/4, 11/16, 1-1/2	1.75	1.38	1.50	1	.25	.25	.27	.38	.500	.69	1.12	.37

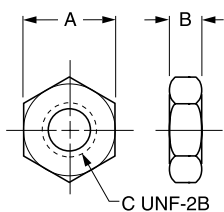
### BRAQUETTE DE TÊTE



Part Number	Bore	A	B	C	D	E	F	G	H	J	K	L
E.0010	5/16	1.00	.37	.25	.13	.37	.31	.25	.75	.06	.44	.12
E.0011	5/16	1.00	.37	.25	.13	.37	.31	.38	.75	.06	.44	.12
E.0012	7/16	1.38	.62	.31	.19	.50	.31	.38	.88	.07	.56	.12
E.0013	7/16,	1.38	.62	.38	.19	.50	.38	.44	.94	.09	.56	.12
E.0013.S	9/16											
E.0015	3/4	1.62	.75	.44	.19	.62	.41	.50	1.09	.10	.69	.19
E.0020	3/4, 7/8,	1.88	1.00	.56	.27	.75	.56	.63	1.38	.12	.81	.25
E.0020.S	1-1/16											
E.0025	1-1/4,	2.50	1.50	.75	.27	.94	.75	.75	1.75	.12	1.00	.38
E.0025.S	1-1/2											
E.0026	1-3/4	3.00	1.50	.87	.35	1.12	.91	1.03	2.16	.19	1.25	.50
E.0030	2	3.12	1.62	1.00	.34	1.12	1.00	1.38	2.50	.25	1.50	.62
E.0030.S												
E.0031	2-1/2	3.75	1.62	1.00	.35	1.44	1.25	1.51	3.00	.25	1.75	.75
E.0032	3	4.37	1.62	1.00	.35	1.75	1.25	1.64	3.14	.25	1.89	.89

**.S = ACIER INOX**

### NOIX DE MONTAGE

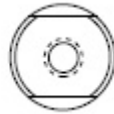
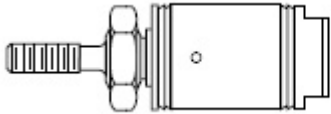


Part Number	Bore	A	B	C
E.0069	5/16	.44	.16	1/4-28
E.0070	5/16, 7/16	.56	.22	3/8-24
E.0071	7/16, 9/16	.69	.25	7/16-20
E.0071.S				
E.0072	3/4	.75	.31	1/2-20
E.0074	3/4, 7/8,	.94	.38	5/8-18
E.0074.S	1-1/16			
E.0076	1-1/4, 1-1/2	1.12	.42	3/4-16
E.0076.S				
E.0077	1-3/4	1.50	.55	1-14
E.0078	2	1.88	.50	1-1/4-12
E.0078.S				
E.0079	2-1/2	2.06	.78	1-3/8-12
E.0080	3	2.25	.84	1-1/2-12

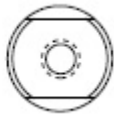
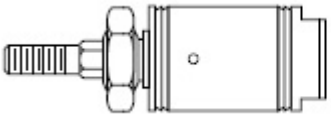
**.S = ACIER INOX**

# CYLINDRES PNEUMATIQUES INOX OPTIONS

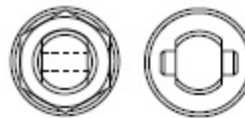
E-5



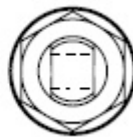
**SÉRIE SR STYLE N**  
MONTAGE AVANT - ENTRÉE RESSORT



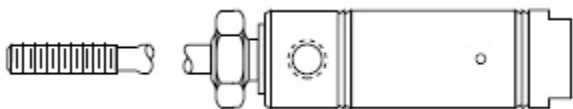
**SÉRIE SR STYLE NR**  
MONTAGE AVANT - ENTRÉE RESSORT - TIGE HEX



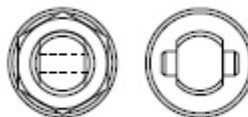
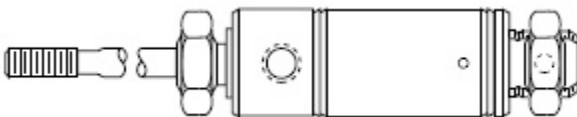
**SÉRIE SR STYLE NRP**  
MONTAGE AVANT & PIVOT - ENTRÉE RESSORT - TIGE HEX



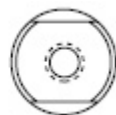
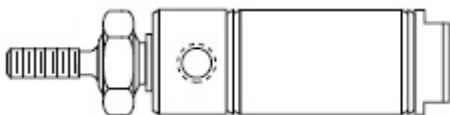
**SÉRIE SR STYLE P**  
MONTAGE AVANT & PIVOT - ENTRÉE RESSORT



**SÉRIE SR STYLE R**  
MONTAGE AVANT - SORTIE RESSORT



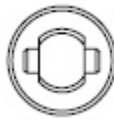
**SÉRIE SR STYLE RP**  
MONTAGE AVANT & PIVOT - SORTIE RESSORT



**SÉRIE SR STYLE D**  
MONTAGE AVANT - DOUBLE ACTION

# CYLINDRES PNEUMATIQUES INOX OPTIONS

E-6



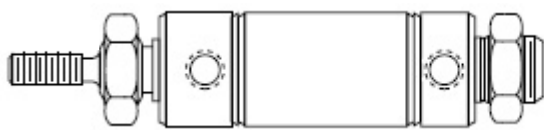
## SÉRIE SR STYLE DP

MONTAGE AVANT & PIVOT - DOUBLE ACTION - PIVOT PIN



## SÉRIE SR STYLE DXP

MONTAGE AVANT & PIVOT - DOUBLE ACTION



## SÉRIE SR STYLE DX

MONTAGE FILETS 2 BOUTS - DOUBLE ACTION



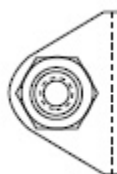
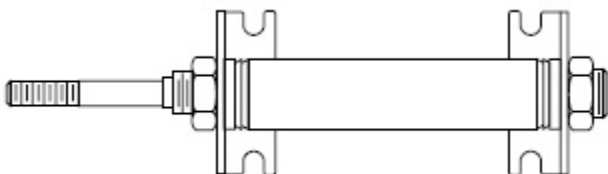
## SÉRIE SR STYLE KDX

MONTAGE FILETS 2 BOUTS - DOUBLE ACTION - DOUBLE TIGE



## SÉRIE SR STYLE KDXH

MONTAGE FILETS 2 BOUTS - DOUBLE ACTION - DOUBLE TIGE -  
TIGE CREUSE



## SÉRIE SR STYLE A

MONTAGE FILETS 2 BOUTS - ENTRÉE RESSORT - TÊTE COURSE  
AJUSTABLE



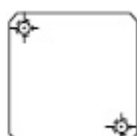
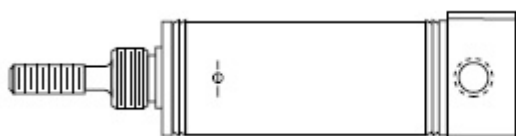
## SÉRIE SR STYLE RA

MONTAGE AVANT - ENTRÉE RESSORT - CAP COURSE  
AJUSTABLE



## SÉRIE SR STYLE AP

MONTAGE PIVOT - ENTRÉE RESSORT - TÊTE COURSE AJUSTABLE

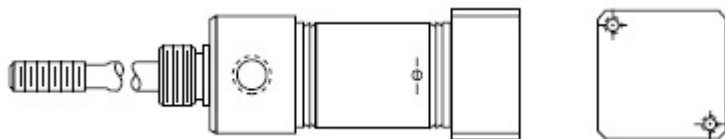


## SÉRIE SR STYLE BRN

MONTAGE BLOC ARRIERE - ENTRÉE RESSORT

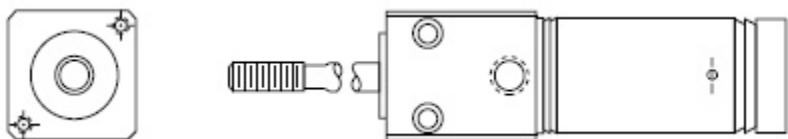
# CYLINDRES PNEUMATIQUES INOX OPTIONS

E-7



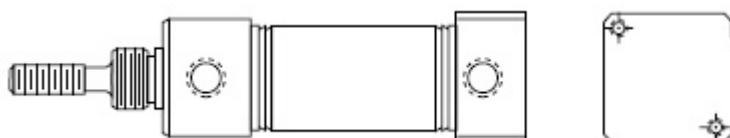
## SÉRIE SR STYLE BRR

MONTAGE BLOC ARRIERE - SORTIE RESSORT



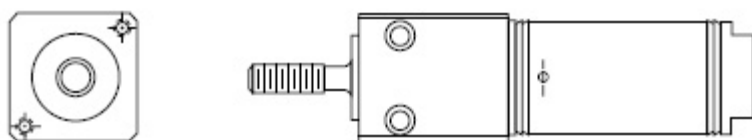
## SÉRIE SR STYLE BFD

MONTAGE BLOC AVANT - DOUBLE ACTION



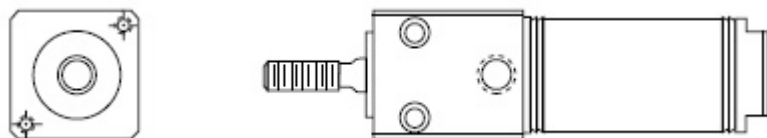
## SÉRIE SR STYLE BRD

MONTAGE BLOC ARRIERE - DOUBLE ACTION



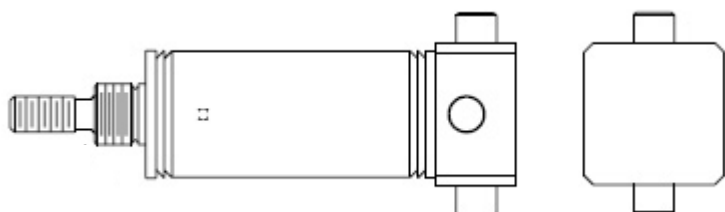
## SÉRIE SR STYLE BFN

MONTAGE BLOC AVANT - ENTRÉE RESSORT



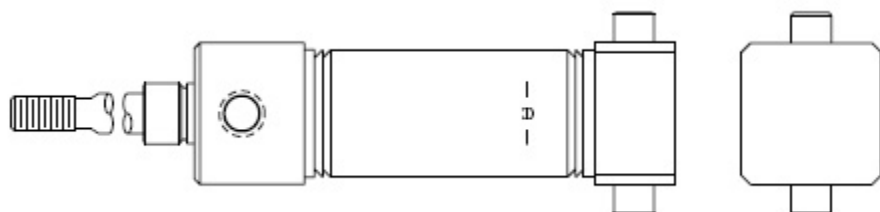
## SÉRIE SR STYLE BFR

MONTAGE BLOC AVANT - SORTIE RESSORT



## SÉRIE SR STYLE TRN

MONTAGE TRUNNION ARRIERE - ENTRÉE RESSORT

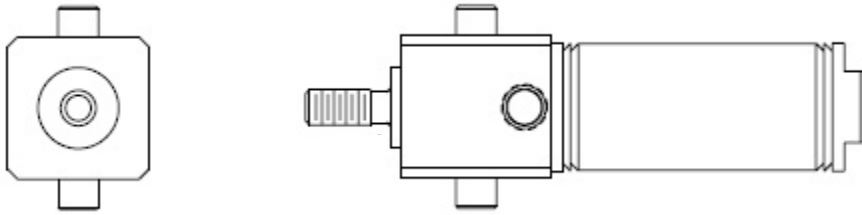


## SÉRIE SR STYLE TRR

MONTAGE TRUNNION ARRIERE - SORTIE RESSORT

# CYLINDRES PNEUMATIQUES INOX OPTIONS

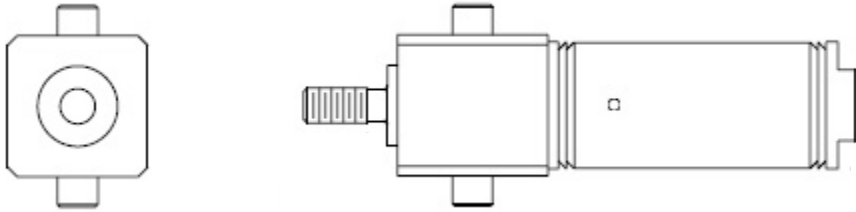
E-8



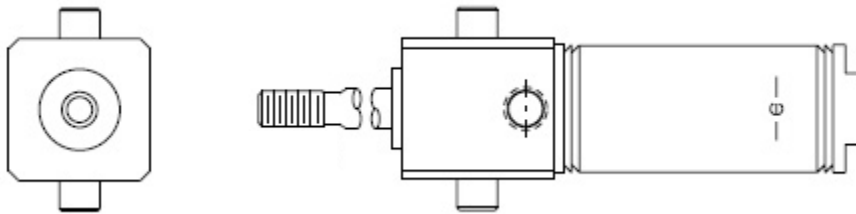
**SÉRIE SR STYLE TFD**  
MONTAGE TRUNNION AVANT - DOUBLE ACTION



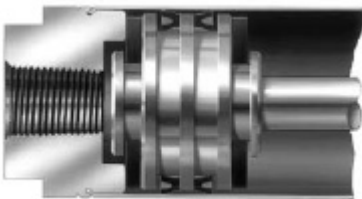
**SÉRIE SR STYLE TRD**  
MONTAGE TRUNNION ARRIERE - DOUBLE ACTION



**SÉRIE SR STYLE TFN**  
MONTAGE TRUNNION AVANT - ENTRÉE RESSORT



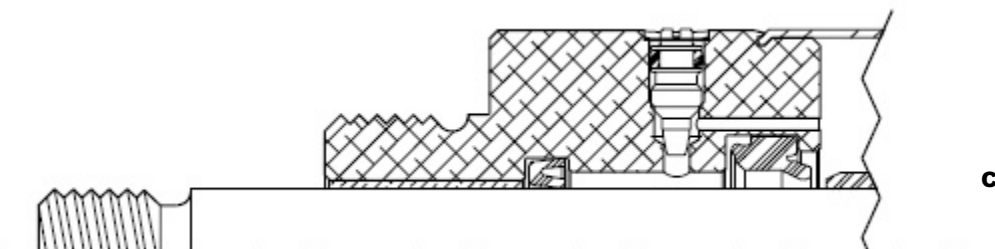
**SÉRIE SR STYLE TFR**  
MONTAGE TRUNNION AVANT - SORTIE RESSORT



**AMMORTISSEUR**



**SÉRIE SR STYLE AR**  
RÉSERVOIR A AIR



**COUSSIN AJUSTABLE**