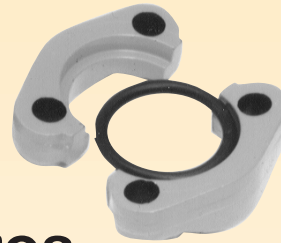


Port Flanges

Code 61 and Code 62

Split Flange Halves

- ◆ SF-0 Series
- ◆ SFX-0 Series



Socket Weld Flanges

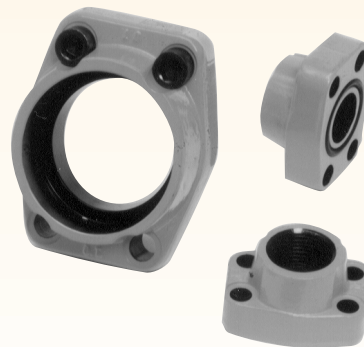
- ◆ O-Ring - W4 & W59
- ◆ Companion - W60 & W61

Female Threaded Flanges

- ◆ O-Ring (NPTF) - W43 & W44
- ◆ Companion (NPTF) - W104 & W45
- ◆ O-Ring (SAE) - W46 & W48
- ◆ Companion (SAE) - W49 & W106

Blanking Flanges

- ◆ Code 61-W36



MP FILTRI (CANADA) INC.

Split Flange Kits

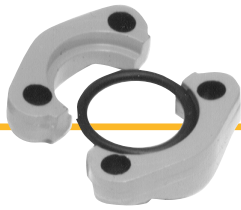
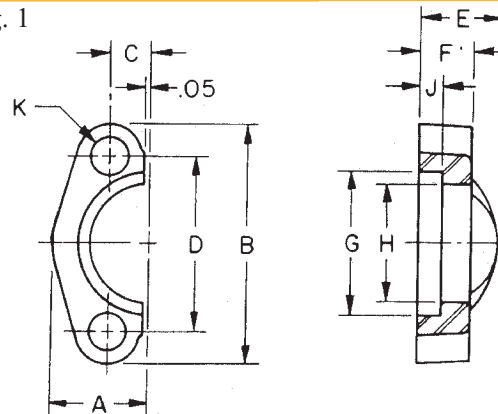


Fig. 1



- ◆ Sets include two halves, bolts, lock washers, and O-ring.
- ◆ Dimensions are in inches.

◆ 3000 PSI - SAE Standard - SAE J518 Code 61 Split Flange (Fig. 1)

Part No.	Flange Size	A ±.030	B ±.030	C ±.010	D ±.010	E ±.030	F ±.016	G ±.010	H ±.010	J ±.005	K ±.010	Max. Work. Press. (PSI)
8 SF-0	.50	.86	2.12	.344	1.500	.75	.50	1.219	.955	.245	.344	5000
12 SF-0	.75	.98	2.56	.438	1.875	.88	.56	1.531	1.265	.245	.406	5000
16 SF-0	1.00	1.11	2.75	.515	2.062	.94	.62	1.781	1.515	.295	.406	5000
20 SF-0	1.25	1.39	3.12	.594	2.312	.88	.56	2.031	1.720	.295	.469	4000
24 SF-0	1.50	1.58	3.69	.703	2.750	1.00	.62	2.406	2.000	.295	.531	3000
32 SF-0	2.00	1.86	4.00	.844	3.062	1.03	.62	2.844	2.470	.355	.531	3000
40 SF-0	2.50	2.09	4.50	1.000	3.500	1.50	.75	3.344	2.950	.355	.531	2500
48 SF-0	3.00	2.53	5.31	1.219	4.188	1.62	.88	4.031	3.580	.355	.656	2000
56 SF-0	3.50	2.70	6.00	1.375	4.750	1.12	.88	4.531	4.030	.422	.656	500
64 SF-0	4.00	2.95	6.38	1.531	5.125	1.38	1.0	5.031	4.530	.422	.656	500

◆ 6000 PSI - SAE J518 Code 62 Split Flange (Fig. 1)

Part No.	Flange Size	A ±.030	B ±.030	C ±.010	D ±.010	E ±.030	F ±.016	G ±.010	H ±.010	J ±.005	K ±.010	Max. Work. Press. (PSI)
12SFX-0	.75	1.14	2.81	.469	2.000	1.12	.75	1.656	1.280	.325	.406	6000
16SFX-0	1.00	1.33	3.19	.547	2.250	1.31	.94	1.906	1.530	.355	.469	6000
20SFX-0	1.25	1.48	3.75	.625	2.625	1.50	1.06	2.156	1.750	.385	.531	6000
24SFX-0	1.50	1.83	4.44	.719	3.125	1.69	1.19	2.531	2.030	.475	.656	6000
32SFX-0	2.00	2.20	5.25	.875	3.812	2.06	1.44	3.156	2.660	.475	.781	6000

Socket Weld Flange Kits

Fig. 2

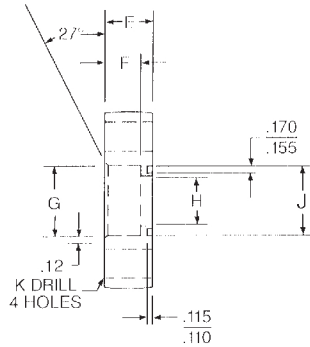
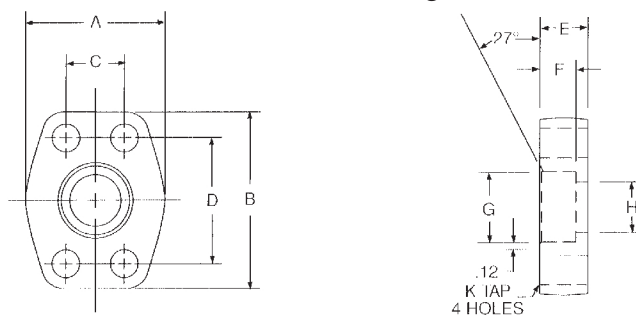


Fig. 3



◆ O-ring flange includes O-ring, bolts and lock washers.

◆ Dimensions are in inches.

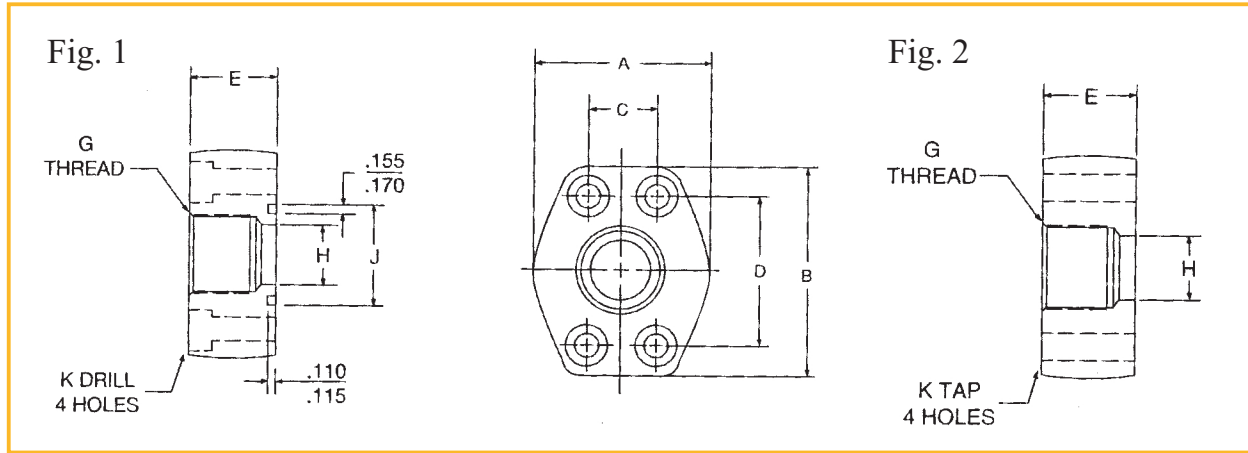
◆ 3000 PSI Flat Socket -Pipe, Code 61

O-Ring Part # Fig 2	Companion Part # Fig 3	Pipe Size	Pad Size	A	B	C	D	E	F	G Dia.	H Dia.	J Dia. Min.	J Dia. Max.	K Drill Dia.	K Tap UN-2B
W4-8-8-U	W61-8-8	.500	.500	1.813	2.125	.688	1.500	.750	.560	.855	.500	1.000	1.005	.344	5/16-18
W4-12-12-U	W61-12-12	.750	.750	2.063	2.563	.875	1.875	.750	.560	1.062	.750	1.250	1.255	.406	3/8-16
W4-16-16-U	W61-16-16	1.00	1.00	2.313	2.750	1.031	2.063	.880	.630	1.328	1.00	1.560	1.565	.406	3/8-16
W4-20-20-U	W61-20-20	1.25	1.25	2.875	3.125	1.188	2.313	.940	.690	1.672	1.25	1.750	1.755	.469	7/16-14
W4-24-24-U	W61-24-24	1.50	1.50	3.250	3.688	1.406	2.750	1.190	.750	1.922	1.50	2.115	2.125	.531	1/2-13
W4-32-32-U	W61-32-32	2.00	2.00	3.813	4.000	1.688	3.063	1.380	.875	2.406	2.00	2.490	2.500	.531	1/2-13
W4-40-40-U	W61-40-40	2.50	2.50	4.281	4.500	2.000	3.500	1.750	1.00	2.906	2.50	2.995	3.005	.531	1/2-13
W4-48-48-U	W61-48-48	3.00	3.00	5.156	5.313	2.438	4.188	2.120	1.25	3.547	3.00	3.615	3.625	.656	5/8-11

◆ 6000 PSI Flat Socket -Pipe, Code 62

O-Ring Part # Fig 2	Companion Part # Fig 3	Pipe Size	Pad Size	A	B	C	D	E	F	G	H	J Max.	J Min.	K Drill Dia.	K Tap UN-2B
W59-8-8-U	W60-8-8	.500	.500	1.88	2.22	.718	1.594	1.250	.560	.855	.500	1.005	1.000	.344	5/16-18
W59-12-12-U	W60-12-12	.750	.750	2.38	2.81	.937	2.000	1.250	.560	1.063	.750	1.255	1.250	.406	3/8-16
W59-16-16-U	W60-16-16	1.00	1.00	2.75	3.19	1.093	2.250	1.500	.630	1.328	1.00	1.565	1.560	.469	7/16-14
W59-20-20-U	W60-20-20	1.25	1.25	3.06	3.75	1.250	2.625	1.500	.690	1.672	1.25	1.755	1.750	.531	1/2-13
W59-24-24-U	W60-24-24	1.50	1.50	3.75	4.44	1.437	3.125	1.750	.750	1.922	1.50	2.125	2.115	.656	5/8-11
W59-32-32-U	W60-32-32	2.00	2.00	4.50	5.25	1.750	3.812	1.750	.875	2.406	2.00	2.500	2.490	.781	3/4-10
W59-40-40-U	W60-40-40	2.50	2.50	5.87	6.87	2.312	4.875	2.060	1.000	2.906	2.50	3.005	2.995	.906	7/8-9
W59-48-48-U	W60-48-48	3.00	3.00	7.00	8.50	2.812	6.000	2.620	1.250	3.547	3.00	3.625	3.615	1.156	1-1/8-7

Female Threaded Flanges Code 61



- ◆ O-ring flange includes O-ring, bolts and lock washers.
- ◆ Dimensions are in inches.

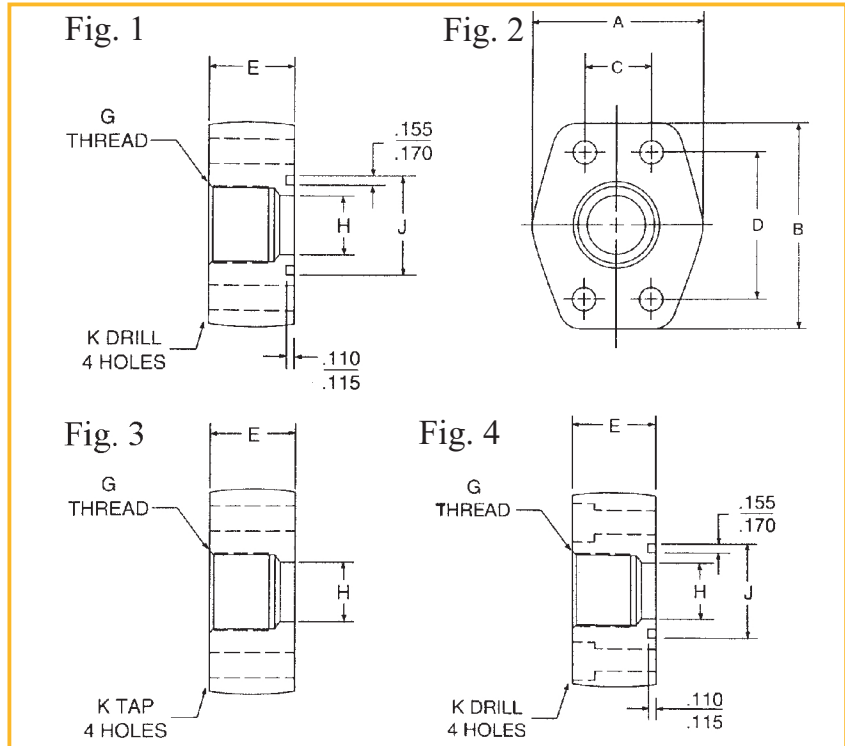
◆ 3000 PSI NPTF Thread, Code 61

O-Ring Part # Fig 1	Companion Part # Fig 2	Pipe Size	Pad Size	A	B	C	D	E	G Thread NPTF	H Dia.	J Dia. Min.	J Dia. Max.	K Drill Dia.	K Tap UN-2B
W43-8-8-U	W104-8-8	.50	.50	1.82	2.17	.688	1.500	1.25	.50	.50	1.000	1.005	.344	5/16-18
W43-12-12-U	W104-12-12	.75	.75	2.06	2.69	.875	1.875	1.25	.75	.75	1.250	1.255	.406	3/8-16
W43-16-16-U	W104-16-16	1.00	1.00	2.31	2.88	1.031	2.062	1.38	1.00	1.00	1.560	1.565	.406	3/8-16
W43-20-20-U	W104-20-20	1.25	1.25	2.88	3.25	1.188	2.312	1.50	1.25	1.25	1.750	1.755	.469	7/16-14
W43-24-24-U	W104-24-24	1.50	1.50	3.25	3.81	1.406	2.750	1.62	1.50	1.50	2.115	2.125	.531	1/2-13
W43-32-32-U	W104-32-32	2.00	2.00	3.81	4.13	1.688	3.062	1.62	2.00	2.00	2.490	2.500	.531	1/2-13
W43-40-40-U	W104-40-40	2.50	2.50	4.28	4.63	2.000	3.500	2.00	2.50	2.50	2.995	3.005	.531	1/2-13
W43-48-48-U	W104-48-48	3.00	3.00	5.16	5.44	2.438	4.188	2.25	3.00	3.00	3.615	3.625	.656	5/8-11

◆ 3000 PSI S.A.E. Straight Thread, Code 61

O-Ring Part # Fig 1	Companion Part # Fig 2	Pipe Size	Pad Size	A	B	C	D	E	G Straight Thread	H	J Min.	J Max.	K Drill Dia.	K Tap UN-2B
W46-8-8-U	W106-8-8	.50	.50	1.82	2.17	.688	1.500	1.25	3/4-16	.50	1.000	1.005	.344	5/16-18
W46-12-12-U	W106-12-12	.75	.75	2.06	2.69	.875	1.875	1.25	11/16-12	.75	1.250	1.255	.406	3/8-16
W46-16-16-U	W106-16-16	1.00	1.00	2.31	2.88	1.031	2.062	1.38	15/16-12	1.00	1.560	1.565	.406	3/8-16
W46-20-20-U	W106-20-20	1.25	1.25	2.88	3.25	1.188	2.312	1.50	1-5/8-12	1.25	1.750	1.755	.469	7/16-14
W46-24-24-U	W106-24-24	1.50	1.50	3.25	3.81	1.406	2.750	1.62	1-7/8-12	1.50	2.115	2.125	.531	1/2-13

Female Threaded Flanges Code 62



- ◆ O-ring flange includes O-ring, bolts and lock washers.
- ◆ Dimensions are in inches.

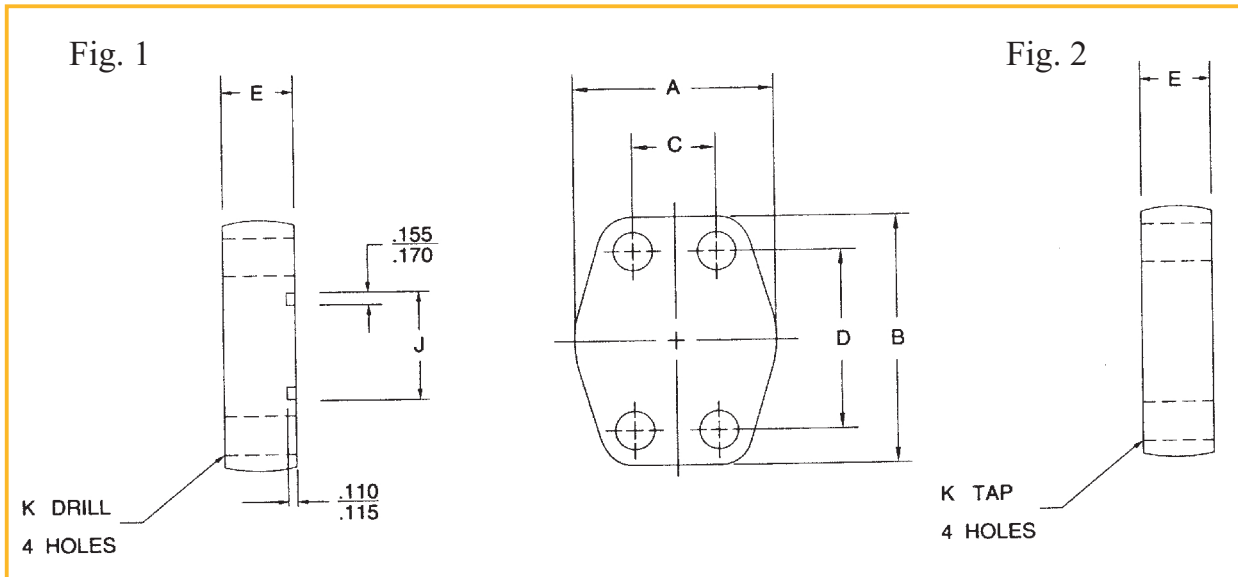
◆ 6000 PSI NPTF Thread, Code 62

O-Ring Part # Fig 1,2	Companion Part # Fig 3	Pipe Size	Pad Size	A	B	C	D	E	Straight Thread G	H	J Min.	J Max.	K Drill Dia.	K Tap UN-2B
W44-12-12-U	W45-12-12	.75	.75	2.50	2.95	.937	2.00	1.25	.75	.75	1.250	1.255	.406	3/8-16
W44-16-16-U	W45-16-16	1.00	1.00	2.75	3.19	1.093	2.25	1.50	1.00	1.00	1.560	1.565	.469	7/16-14
W44-20-20-U	W45-20-20	1.25	1.25	3.06	3.75	1.25	2.625	1.50	1.25	1.25	1.750	1.755	.531	1/2-13
W44-24-24-U	W45-24-24	1.50	1.50	3.75	4.44	1.437	3.125	1.75	1.50	1.50	2.115	2.125	.656	5/8-11
W44-32-32-U	W45-32-32	2.00	2.00	4.50	5.25	1.75	3.812	1.75	2.00	2.00	2.490	2.500	.781	3/4-10

◆ S.A.E Straight Thread, Code 62

O-Ring Part # Fig 2,4	Companion Part # Fig 3	Pipe Size	Pad Size	A	B	C	D	E	Straight Thread G	H	J Min.	J Max.	K Drill Dia.	K Tap UN-2B
W48-12-12	W49-12-12	.75	.75	2.50	2.95	.937	2.00	1.25	1 1/16-12	.75	1.250	1.255	.406	3/8-16
W48-16-16	W49-16-16	1.00	1.00	2.75	3.19	1.093	2.25	1.50	1 5/16-12	1.00	1.560	1.565	.409	7/16-14
W48-20-20	W49-20-20	1.25	1.25	3.06	3.75	1.25	2.625	1.50	1 5/8-12	1.25	1.750	1.755	.531	1/2-13
W48-24-24	W49-24-24	1.50	1.50	3.75	4.44	1.437	3.125	1.75	1 7/8-12	1.50	2.115	2.125	.656	5/8-11
W48-32-32	W49-32-32	2.00	2.00	4.50	5.25	1.75	3.812	1.75	2 1/2-12	2.00	2.490	2.500	.781	3/4-10

Blanking Flanges Code 61



- ◆ O-ring flange includes O-ring, bolts and lock washers.
- ◆ Dimensions are in inches.

◆ Blanking, Code 61

O-Ring Part # Fig 1	Flat Face Part # Fig 2	Pad Size	A	B	C	D	E	J Dia. Min.	J Dia. Max.	K Drill Dia.	K Tap UN-2B
W36-12-12-U	W37-12-12	0.750	2.063	2.563	0.875	1.875	0.750	1.250	1.255	.406	3/8-16
W36-16-16-U	W37-16-16	1.000	2.313	2.750	1.031	2.063	0.880	1.560	1.565	.406	3/8-16
W36-20-20-U	W37-20-20	1.250	2.875	3.125	1.188	2.313	0.940	1.750	1.755	.469	7/16-14
W36-24-24-U	W37-24-24	1.500	3.250	3.688	1.406	2.750	1.190	2.115	2.125	.531	1/2-13
W36-32-32-U	W37-32-32	2.000	3.813	4.000	1.688	3.063	1.440	2.490	2.500	.531	1/2-13
W36-40-40-U	W37-40-40	2.500	4.281	4.500	2.000	3.500	1.815	2.995	3.005	.531	1/2-13
W36-48-48-U	W37-48-48	3.000	5.165	5.313	2.438	4.188	2.190	3.615	3.625	.656	5/8-11